

TREASURY MANAGEMENT STRATEGY STATEMENT, TREASURY MANAGEMENT POLICY STATEMENT, MINIMUM REVENUE PROVISION POLICY STATEMENT AND ANNUAL INVESTMENT STRATEGY 2025/26

Purpose

To comply with the requirement of the Council's Treasury Management Policy in reporting to Council the proposed strategy for the forthcoming year and the Local Government Act 2003 with the reporting of the Prudential Indicators.

Executive Summary

The Local Government Act 2003 requires the Council to produce prudential indicators in line with the Prudential Code.

This report outlines the Council's prudential indicators for 2025/26 – 2027/28 and sets out the expected Treasury operations for this period. This report and associated tables fulfil the statutory requirement of the Local Government Act 2003 by:

- Reporting the prudential indicators as required by the Chartered Institute of Public Finance and Accountancy (CIPFA) Prudential Code for Capital Finance in Local Authorities;
- Setting the Council's Minimum Revenue Provision (MRP) Policy, which defines how the Council will pay for capital assets through revenue contributions each year (as required by Regulation under the Local Government and Public Involvement in Health Act 2007);
- Setting the Treasury Management Strategy in accordance with the CIPFA Code of Practice on Treasury Management;
- Adopting the Council's Treasury Management Policy Statement as recommended within the CIPFA Code of Practice 2021;
- Setting the Investment Strategy (in accordance with the Ministry of Housing, Communities and Local Government (MHCLG) investment guidance); and
- Affirming the effective management and responsibility for the control of risk and clearly identifying our appetite for risk. The Council's risk appetite is low in order to give priority to **S**ecurity, **L**iquidity then **Y**ield (or return on investments).

Under the requirements of the CIPFA Code of Practice and associated Guidance Notes 2021, the following four clauses have been adopted:

1. This Council will create and maintain, as the cornerstones for effective treasury and investment management:

- a. A treasury management policy statement stating the policies, objectives and approach to risk management of its treasury management activities
 - b. Suitable treasury management practices (TMPs) setting out the manner in which the organisation will seek to achieve those policies and objectives, and prescribing how it will manage and control those activities
 - c. Investment management practices (IMPs) for investments that are not for treasury management purposes.
2. This Council will receive reports on its treasury and investment management policies, practices and activities, including, as a minimum, an annual strategy and plan in advance of the year, a mid-year review and an annual report after its close in the form prescribed in its TMPs and IMPs.
 3. This Council delegates responsibility for the implementation and regular monitoring of its treasury management policies and practices to Cabinet, and for the execution and administration of treasury management decisions to the Executive Director Finance, who will act in accordance with the organisation's policy statement, TMPs and IMPs, and, as a CIPFA member, CIPFA's Standard of Professional Practice on treasury management.
 4. This organisation nominates the Audit and Governance Committee to be responsible for ensuring effective scrutiny of the treasury management strategy and policies.

Equalities Implications

There are no equalities implications arising from the report.

Legal Implications

Approval of Prudential Indicators and an Annual Investment Strategy is a legal requirement of the Local Government Act 2003. Members are required under the CIPFA Code of Practice to have ownership and understanding when making decisions on Treasury Management matters.

Resource and Value for Money Implications

All financial resource implications are detailed in the body of this report which links to the Council's Medium Term Financial Strategy and Capital Strategy.

Risk Implications

Risk is inherent in Treasury Management and as such a risk based approach has been adopted throughout the report with regard to Treasury Management processes.

A Glossary of terms utilised within the report can be found at **ANNEX 9**.

Report Author Please contact Omotayo Lawal, Head of Finance, ext 246 or Jo Goodfellow, Interim Executive Director Finance, ext 241.

Background Papers:-	<i>Budget & Medium Term Financial Strategy 2025/26</i>
	<i>Mid-year Treasury Report 2024/25 Council, 10/12/24</i>
	<i>Annual Treasury Report 2023/24 Council 10/09/24</i>
	<i>Treasury Management Strategy Statement, Treasury Management Policy Statement, Minimum Revenue Provision Policy Statement & Annual Investment Statement 2024/25 Council 27/02/24</i>
	<i>Treasury Management Training slides 10th February 2025</i>
	<i>CIPFA Code of Practice on Treasury Management in Public Services 2017</i>
	<i>CIPFA Code of Practice on Treasury Management in Public Services 2021</i>
	<i>CIPFA Prudential Code for Capital Finance in Local Authorities 2021</i>
	<i>DCLG Guidance on Local Government Investments March 2010</i>
	<i>Local Government Act 2003</i>
	<i>Treasury Management Practices 2025/26 (Operational Detail)</i>

1. INTRODUCTION

1.1 Background

The Council is required to operate a balanced budget, which broadly means that cash raised during the year will meet cash expenditure. Part of the Treasury Management operation is to ensure that this cash flow is adequately planned, with cash being available when it is needed. Surplus monies are invested in low-risk counterparties or instruments commensurate with the Council's low risk appetite, providing adequate liquidity initially before considering investment return.

The second main function of the Treasury Management service is the funding of the Council's capital plans. These capital plans provide a guide to the borrowing need of the Council, essentially the longer-term cash flow planning, to ensure that the Council can meet its capital spending obligations. This management of longer-term cash may involve arranging long or short term loans, or using longer term cash flow surpluses. On occasion, when it is prudent and economic, any debt previously drawn may be restructured to meet Council risk or cost objectives.

The contribution the treasury management function makes to the Council is critical, as the balance of debt and investment operations ensure liquidity or the ability to meet spending commitments as they fall due, either on day-to-day revenue or for larger capital projects. The treasury operations will see a balance of the interest costs of debt and the investment income arising from cash deposits affecting the available budget. Since cash balances generally result from reserves and balances, it is paramount to ensure adequate security of the sums invested, as a loss of principal will in effect result in a loss to the General Fund Balance.

CIPFA defines treasury management as:

The management of the local authority's borrowing, investments and cash flows, including its banking, money market and capital market transactions; the effective control of the risks associated with those activities; and the pursuit of optimum performance consistent with those risks.

Whilst any commercial initiatives or loans to third parties will impact on the treasury function, these activities are generally classed as non-treasury activities, (arising usually from capital expenditure), and are separate from the day to day treasury management activities.

1.2 Updated Treasury Management and Prudential Codes

CIPFA released new editions of the Treasury Management Code and Prudential Code on 20th December 2021, with reporting requirements effective from 2023/24 financial year. The main objective of the 2021 Codes was to respond to the major expansion of local authority investment activity over the past few years into the purchase of non-financial investments, particularly property. The Codes require an authority to ensure that: -

- it defines its risk appetite and its governance processes for managing risk.
- it sets out, at a high level, its investment policy in relation to environmental, social and governance aspects.
- it adopts a new liability benchmark treasury indicator to support the financing risk management of the capital financing requirement; this is to be shown in chart form for a minimum of ten years, with material differences between the liability benchmark and actual loans to be explained.

- it does not borrow to finance capital expenditure to invest primarily for commercial return.
- increases in the CFR and borrowing are undertaken solely for purposes directly and primarily related to the functions of the authority. Where any financial returns are related to the financial viability of the project in question, they should be incidental to its primary purpose.
- an annual review is conducted to evaluate whether commercial investments should be sold to release funds to finance new capital expenditure or refinance maturing debt.
- its capital plans and investment plans are affordable and proportionate.
- all borrowing/other long-term liabilities are within prudent and sustainable levels.
- risks associated with commercial investments are proportionate to overall financial capacity to sustain losses.
- treasury management decisions are in accordance with good professional practice.
- reporting to members is done quarterly, including updates of prudential indicators.
- it should assess the risks and rewards of significant investments over the **LONG TERM**, as opposed to the usual three to five years that most local authority financial planning has been conducted over, to ensure the long-term financial sustainability of the authority.
- it has access to the appropriate level of **expertise** to be able to operate safely in all areas of investment and capital expenditure, and to involve members adequately in making properly informed decisions on such investments.

The revised Treasury Management Code requires all investments and investment income to be attributed to one of the following three purposes: -

Treasury management

Arising from the organisation's cash flows or treasury risk management activity, this type of investment represents balances which are only held until the cash is required for use. Treasury investments may also arise from other treasury risk management activity which seeks to prudently manage the risks, costs or income relating to existing or forecast debt or treasury investments.

Service delivery

Investments held primarily and directly for the delivery of public services including housing, regeneration and local infrastructure. Returns on this category of investment which are funded by borrowing are permitted only in cases where the income is "either related to the financial viability of the project in question or otherwise incidental to the primary purpose".

Commercial return

Investments held primarily for financial return with no treasury management or direct service provision purpose. Risks on such investments should be proportionate to an authority's financial capacity – i.e., that 'plausible losses' could be absorbed in budgets or reserves without unmanageable detriment to local services. An authority must not borrow to invest primarily for financial return.

1.3 Reporting Requirements

1.3.1 Capital Strategy

The CIPFA 2021 Prudential and Treasury Management Codes require all local authorities to prepare a capital strategy report which will provide the following:

- a high-level long term overview of how capital expenditure, capital financing and treasury management activity contribute to the provision of services;
- an overview of how the associated risk is managed;
- the implications for future financial sustainability.

The aim of the capital strategy is to ensure that all the Council's elected members fully understand the overall long-term policy objectives and resulting capital strategy requirements, governance procedures and risk appetite.

The capital strategy is reported separately from the Treasury Management Strategy Statement; non-treasury investments will be reported through the former. This ensures the separation of the core treasury function under security, liquidity and yield principles, and the policy and commercialism investments usually driven by expenditure on an asset.

1.3.2 Treasury Management Reporting

The Council is currently required to receive and approve, as a minimum, three main reports each year, which incorporate a variety of policies, estimates and actuals.

Prudential and Treasury Indicators and Treasury Strategy (this report) –

The first, and most important, report is forward looking and covers:

- the capital plans (including prudential indicators);
- a Minimum Revenue Provision (MRP) Policy (how residual capital expenditure is charged to revenue over time);
- the Treasury Management Strategy (how the investments and borrowings are to be organised) including treasury indicators; and
- an Annual Investment Strategy (the parameters on how investments are to be managed).

A Mid Year Treasury Management Report

This is primarily a progress report and will update Members on the capital position, amending prudential indicators as necessary, and whether any policies require revision.

An Annual Treasury Report

This is a backward looking review document and provides details of a selection of actual prudential and treasury indicators and actual treasury operations compared to the estimates within the strategy.

Scrutiny

The above reports are required to be adequately scrutinised before being recommended to the Council. This role is undertaken by the Audit and Governance Committee.

Quarterly reports – In addition to the three major reports detailed above, from 2023/24 quarterly reporting (end of June/end of December) is also required. However, these additional reports do not have to be reported to Full Council but do require to be adequately scrutinised. This role is undertaken by the Corporate Scrutiny Committee as part of their review of the Quarterly Performance Healthcheck.

1.4 Treasury Management Strategy for 2025/26

The strategy for 2025/26 covers two main areas:

Capital Issues

- the capital expenditure plans and the associated Prudential Indicators;
- the Minimum Revenue Provision (MRP) policy.

Treasury Management Issues

- the current treasury position;
- treasury indicators which will limit the treasury risk and activities of the Council;
- prospects for interest rates;
- the borrowing strategy;
- policy on borrowing in advance of need;
- debt rescheduling;
- the investment strategy;
- creditworthiness policy; and
- policy on use of external service providers.

These elements cover the requirements of the Local Government Act 2003, DLUHC (now MHCLG) Investment Guidance, DLUHC(now MHCLG) MRP Guidance, the CIPFA Prudential Code, and the CIPFA Treasury Management Code.

1.5 Training

The CIPFA Treasury Management Code requires the responsible officer to ensure that Members with responsibility for treasury management receive adequate training in treasury management. This especially applies to Members responsible for scrutiny.

Furthermore, the Code states it is expected that all organisations have a formal and comprehensive knowledge and skills or training policy for the effective acquisition and retention of treasury

management knowledge and skills for those responsible for management, delivery, governance and decision making.

The scale and nature of this will depend on the size and complexity of the organisation's treasury management needs. Organisations should consider how to assess whether treasury management staff and Council members have the required knowledge and skills to undertake their roles and whether they have been able to maintain those skills and keep them up to date.

As a minimum, authorities should carry out the following to monitor and review knowledge and skills:

- Record attendance at training and ensure action is taken where poor attendance is identified.
- Prepare tailored learning plans for treasury management officers and Council members.
- Require treasury management officers and Council members to undertake self-assessment against the required competencies.
- Have regular communication with officers and Council members, encouraging them to highlight training needs on an ongoing basis.

In further support of the revised training requirements, CIPFA's Better Governance Forum and Treasury Management Network have produced a self-assessment by members responsible for the scrutiny of treasury management, with a template available to be used to inform Member training requirements.

Training on Treasury Management issues was most recently delivered for Members in February 2025, with training on the Corporate Capital Strategy in February 2020, and will be provided as and when required. The training needs of Treasury Management officers are regularly reviewed. A formal record of the training received by officers central to the Treasury function will be maintained by the Interim ED Finance. Similarly, a formal record of the treasury management/capital finance training received by members will also be maintained by the Interim ED Finance.

1.6 Treasury Management Consultants

The Council uses MUFG Corporate Markets as its external treasury management advisors.

The Council recognises that responsibility for Treasury Management decisions remains with the organisation at all times and will ensure that undue reliance is not placed upon the services of our external service providers. All decisions will be undertaken with regards to all available information, including, but not solely, our treasury advisors.

It also recognises that there is value in employing external providers of Treasury Management services in order to acquire access to specialist skills and resources. The Council will ensure that the terms of their appointment and the methods by which their value will be assessed are properly agreed and documented, and subjected to regular review.

2. THE CAPITAL PRUDENTIAL INDICATORS 2025/26 – 2027/28

The Council's Capital Expenditure plans are the key driver of Treasury Management activity. The output of the capital expenditure plans is reflected in the prudential indicators, which are

designed to assist members' overview and confirm capital expenditure plans are prudent, affordable and sustainable.

2.1 Capital Expenditure

This prudential Indicator is a summary of the Council's Capital Expenditure plans, both those agreed previously, and those forming part of this budget cycle. Members are asked to approve the capital expenditure forecast.

Capital Expenditure £m	2023/24 Actual	2024/25 Predicted Outturn*	2024/25 Budget	2024/25 Re- profiling	2025/26 Estimate**	2026/27 Estimate	2027/28 Estimate
Non-HRA	11.948	19.920	25.396	5.268	2.512	1.286	1.041
HRA	11.320	10.872	15.477	4.230	11.148	10.567	10.822
Commercial Activities/Non- Financial Investments ***	0.468	0.054	2.184	2.130	-	-	-
Total	23.737	30.846	43.057	11.628	13.660	11.852	11.863

* Actual Projected at Period 9

** excludes projected slippage from 2024/25

*** commercial activities/non-financial investments relates to Gungate development

The projected slippage into 2025/26 of £11.63m relates mainly to Gungate development, Disabled Facility Grants & High Rise Ventilation System capital schemes.

Other long-term liabilities - the above financing need excludes other long-term liabilities, such as PFI and leasing arrangements which already include borrowing instruments.

The table below summarises the above capital expenditure plans and how these plans are being financed by capital or revenue resources. Any shortfall of resources results in a funding borrowing need.

Capital Financing (GF/HRA)	2023/24 Actual	2024/25 Predicted Outturn*	2024/25 Budget	2024/25 Re- profiling	2025/26 Estimate**	2026/27 Estimate	2027/28 Estimate
Capital Receipts	2.075	12.521	15.432	3.146	1.084	1.117	0.938
Capital Grants	10.610	7.114	7.978	0.864	1.322	0.672	0.672
Capital Reserves	5.572	5.127	8.047	2.853	4.720	3.215	3.762
Revenue Reserves	4.440	5.502	6.980	1.178	4.824	3.574	3.658
Revenue Contributions	-	-	-	-	-	-	-

Net financing need for the year	1.040	0.581	4.619	3.587	1.710	3.275	2.833
Total	23.737	30.846	43.057	11.628	13.660	11.852	11.863

* Actual Projected at Period 9

** excludes projected slippage from 2024/25

The net financing need for commercial activities/non-financial investments included in the above table against expenditure is shown below:

Commercial Activities/Non-Financial Investments	2023/24 Actual	2024/25 Predicted Outturn*	2024/25 Budget	2024/25 Re-profiling	2025/26 Estimate**	2026/27 Estimate	2027/28 Estimate
Capital Expenditure	0.468	0.054	2.184	2.130	-	-	-
Financing Costs	(0.468)	(0.054)	(2.184)	(2.130)	-	-	-
Net financing need for the year	-	-	-	-	-	-	-
Percentage of total net financing need %	-	-	-	-	-	-	-

2.2 The Council's Borrowing Need (the Capital Financing Requirement)

The second prudential indicator is the Council's Capital Financing Requirement (CFR). The CFR is simply the total historic outstanding capital expenditure which has not yet been paid for from either revenue or capital resources. It is essentially a measure of the Council's indebtedness and so its underlying borrowing need. Any capital expenditure above, which has not immediately been paid for through a revenue or capital resource, will increase the CFR.

The CFR does not increase indefinitely, as the Minimum Revenue Provision (MRP) is a statutory annual revenue charge which broadly reduces the indebtedness in line with each asset's life, and so charges the economic consumption of capital assets as they are used.

The CFR includes any other long term liabilities (e.g. PFI schemes, finance leases). Whilst these increase the CFR, and therefore the Council's borrowing requirement, these types of scheme include a borrowing facility by the PFI, PPP lease provider and so the Council is not required to separately borrow for these schemes. The Council currently has no such schemes within the CFR.

The Council is asked to approve the CFR projections below:

£m	2023/24 Actual	2024/25 Revised Estimate	2025/26 Estimate	2026/27 Estimate	2027/28 Estimate
Capital Financing Requirement					
CFR – non housing	4.092	4.492	6.992	6.826	6.525
CFR - housing	70.507	70.507	73.057	75.984	78.572
CFR - commercial activities/non-financial investments	-	-	-	-	-
Total CFR	74.600	74.999	80.049	82.810	85.097
Movement in CFR	0.833	0.400	5.049	2.761	2.287
Movement in CFR represented by	-	-	-	-	-
Net financing need for the year (above)	1.040	0.581	5.297	3.275	2.833
Less MRP/VRP and other financing movements	(0.207)	(0.181)	(0.247)	(0.514)	(0.546)
Movement in CFR	0.833	0.400	5.049	2.761	2.287

* CFR 2022/23 £73.767m

A key aspect of the regulatory and professional guidance is that elected members are aware of the size and scope of any commercial activity in relation to the Council's overall financial position. The capital expenditure figures shown in 2.1 and the details above demonstrate the scope of this activity and, by approving these figures, consider the scale proportionate to the Council's remaining activity.

2.3 Liability Benchmark

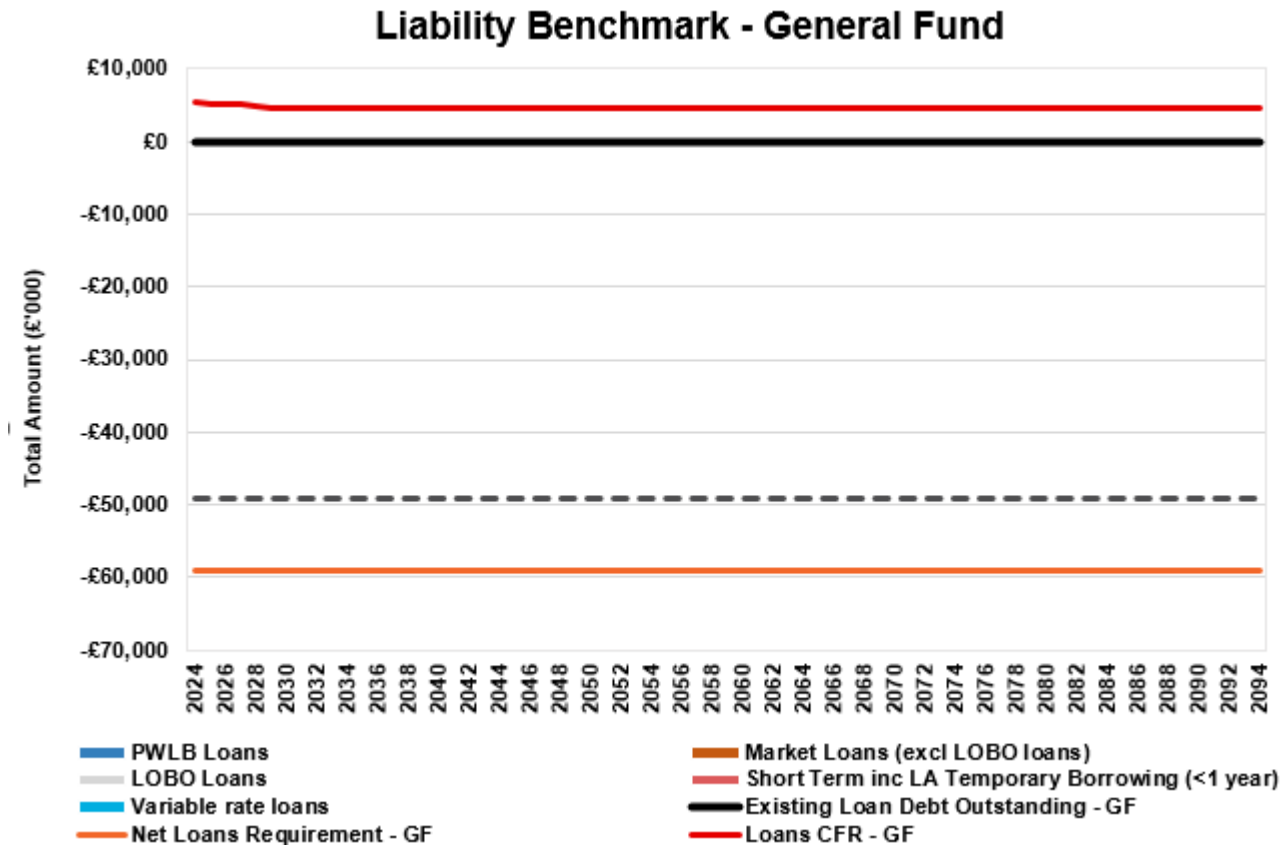
The Council is required to estimate and measure the Liability Benchmark (LB) for the forthcoming financial year and the following two financial years, as a minimum. The liability benchmark analysis should be seen as a tool which will assist the Council with its future borrowing requirements and it highlights the Council's optimum position for external borrowing.

There are four components to the LB: -

1. **Existing loan debt outstanding:** the Council's existing loans that are still outstanding in future years.
2. **Loans CFR:** this is calculated in accordance with the loans Capital Financing Requirement definition in the Prudential Code, reflecting the Council's borrowing need and projected into the future based on approved prudential borrowing and planned MRP.
3. **Net loans requirement:** this will show the Council's gross loan debt less treasury management investments at the last financial year-end, projected into the future and based on its approved prudential borrowing, planned MRP and any other major cash flows forecast.

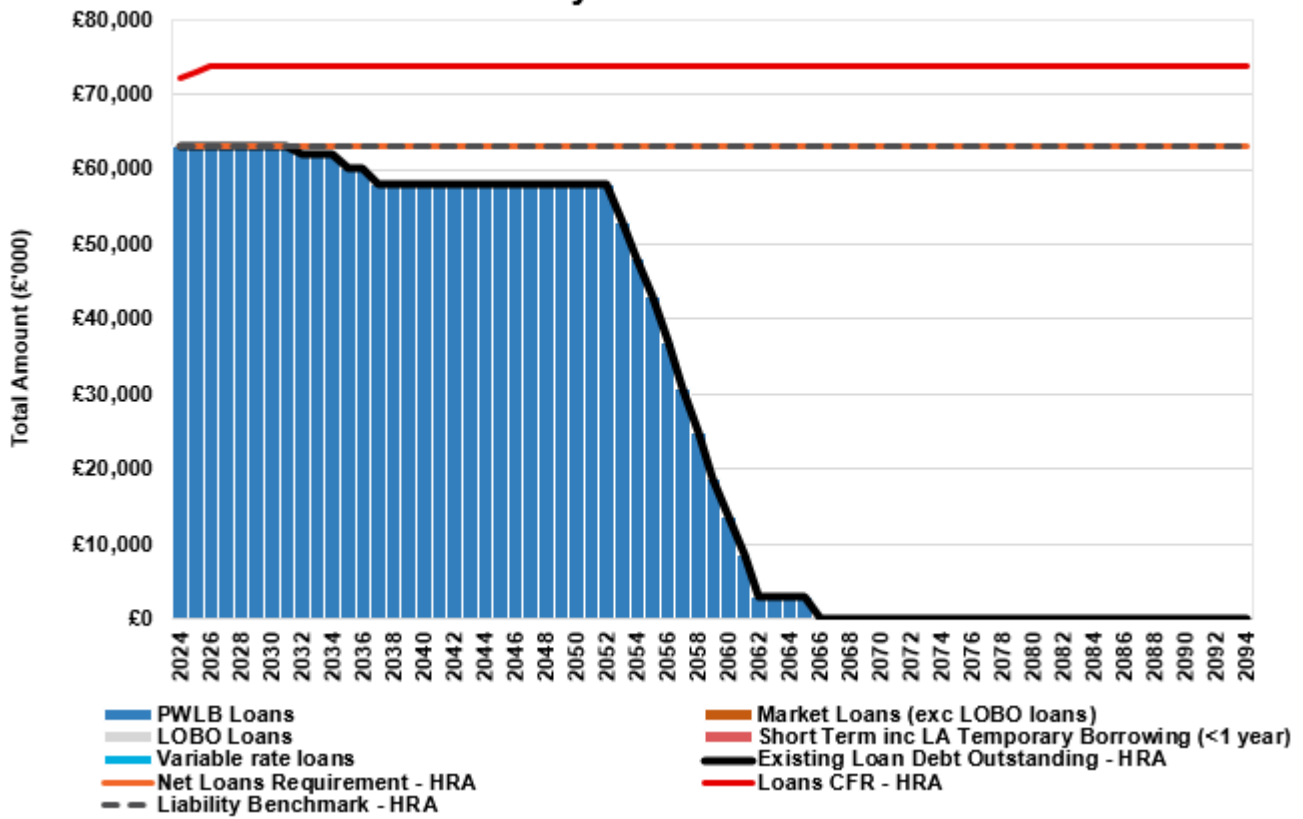
4. **Liability benchmark** (or gross loans requirement): this is a forecast of the level of gross loan debt the Council will require in line with its budget plans. It is based on the net loans requirement, plus a liquidity allowance for treasury management investments, which is an estimate of the level of short-term investments needed to provide an adequate level of liquidity for daily cash flow management. We have estimated our liquidity allowance at £10m.

The following graphs detail the liability benchmark for each of the General Fund and HRA, and then the combined position.



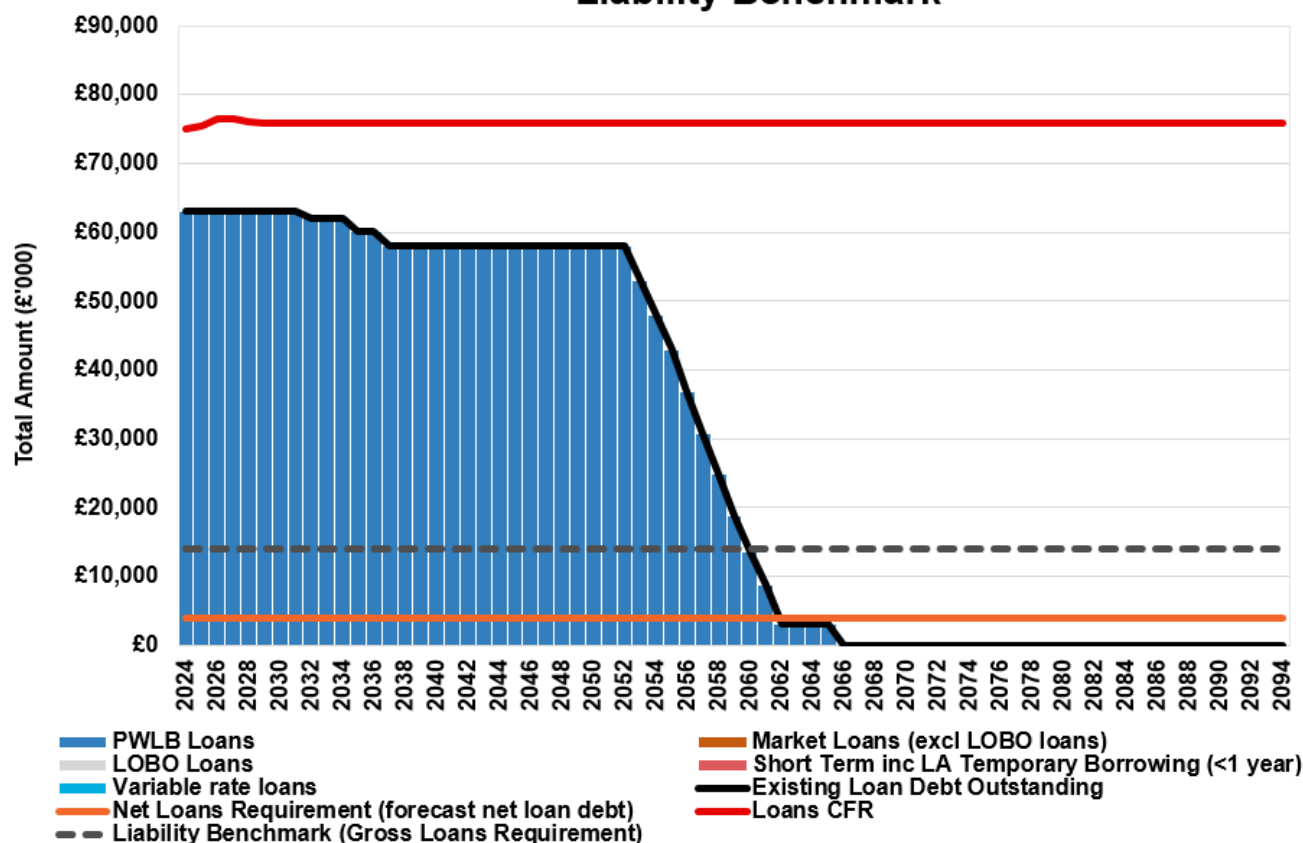
The net loans requirement and liability benchmark for the General Fund is negative as this is reflective of the balance of GF treasury investments held.

Liability Benchmark - HRA



The liability benchmark for the HRA is set at the same level as the net loans requirement (£63m reflecting PWLB loans outstanding) as there is no need to maintain additional borrowing to meet liquidity needs as this falls to the General Fund.

Liability Benchmark



The combined liability benchmark chart above shows the existing loan debt outstanding, the capital financing requirement, net loans requirement and liability benchmark indicator.

The difference between the loans capital financing requirement and existing debt indicates internal borrowing. Prior to any new borrowing, the Council will have regard to underlying assumptions of liability benchmark analysis as part of prudent treasury management.

2.4 Core Funds and Expected Investment Balances

The application of resources (capital receipts, reserves etc.) to either finance capital expenditure or other budget decisions to support the revenue budget will have an ongoing impact on investments unless resources are supplemented each year from new sources (asset sales etc.). Detailed below are estimates of the year end balances for each resource and anticipated day to day cash flow balances.

Year End Resources £m	2023/24 Actual	2024/25 Estimate	2025/26 Estimate	2026/27 Estimate	2027/28 Estimate
Fund Balances/Reserves	42.799	39.326	30.419	25.639	20.413
Capital Receipts	15.153	6.360	3.340	3.433	3.705
Provisions*	2.426	2.426	2.426	2.426	2.426
Other	-	-	-	-	-
Total Core Funds	60.378	48.111	36.184	31.498	26.544
Working Capital**	19.025	16.254	(0.16)	0.054	7.387
(Under)/Over Borrowing	(11.540)	(11.939)	(16.989)	(19.750)	(22.037)
Expected Investments	67.863	52.426	19.038	11.803	11.894

* Includes full provision for NNDR appeals

** Working capital balances shown are estimated year end; these may be higher mid year.

2.5 Minimum Revenue Provision (MRP) Policy Statement

Under Regulation 27 of the Local Authorities (Capital Finance and Accounting) (England) Regulations 2003, where the Council has financed capital expenditure by borrowing it is required to make a provision each year through a revenue charge (MRP).

The Authority is required to calculate a prudent provision of MRP which ensures that the outstanding debt liability is repaid over a period that is reasonably commensurate with that over which the capital expenditure provides benefits. The MRP Guidance (2024) gives four ready-made options for calculating MRP, but the Council can use any other reasonable basis that it can justify as prudent.

The MRP policy statement requires full council approval (or closest equivalent level) in advance of each financial year.

For Capital Expenditure incurred before 1 April 2008 which forms part of Supported Capital Expenditure, the MRP policy will be:

- **Existing practice** - MRP will follow the existing practice outlined in former DLUHC regulations (option 1)

This option provides for an approximate 4% reduction in the borrowing need (CFR) each year.

From 1 April 2008 for all unsupported borrowing (including PFI and finance leases) the MRP policy will be:

- **Asset Life Method** – MRP will be based on the estimated life of the assets, in accordance with the regulations (this option must be applied for any expenditure capitalised under a Capitalisation Direction) (option 3);

This option provides for a reduction in the borrowing need over approximately the asset's life.

Regulation 27(3) allows a local authority to charge MRP in the financial year following the one in which capital expenditure finance by debt was incurred. Capital expenditure incurred during 2024/25 will not be subject to an MRP charge until 2025/26, or in the year after the asset becomes operational.

The Authority will apply the asset life method for any expenditure capitalised under a Capitalisation Direction.

There is no requirement on the HRA to make a minimum revenue provision but there is a requirement for a charge for depreciation to be made.

MRP in respect of assets acquired under Finance Leases or PFI will be charged at an amount equal to the principal element of the annual repayment.

MRP Overpayments – Under the MRP guidance, any charges made in excess of the statutory MRP can be made, known as voluntary revenue provision (VRP).

VRP can be reclaimed in later years if deemed necessary or prudent. In order for these amounts to be reclaimed for use in the budget, this policy must disclose the cumulative overpayment made each year. The Council has made no VRP overpayments.

3. BORROWING

The capital expenditure plans set out in Section 2 provide details of the service activity of the Council. The Treasury Management function ensures that the Council's cash is organised in accordance with the relevant professional codes, so that sufficient cash is available to meet this service activity and the Council's capital strategy. This will involve both the organisation of the cash flow and, where capital plans require, the organisation of appropriate borrowing facilities. The strategy covers the relevant treasury / prudential indicators, the current and projected debt positions and the annual investment strategy.

3.1 Current Portfolio Position

The overall Treasury Management portfolio as at 31st March 2024 and for the position as at 31st December 2024 are shown below for both borrowing and investments.

	TREASURY PORTFOLIO			
	ACTUAL AT 31/3/24		CURRENT AT 31/12/24	
	£m	%	£m	%
Treasury Investments				
Banks	15.000	21.66	5.000	7.73
Building Societies	-	-	-	-
Local Authorities	34.000	49.10	45.000	60.27
Money Market Funds	10.108	14.60	14.302	19.15
Certificates of Deposit	-	-	-	-
Total Managed in-House	59.108	85.35	64.302	86.12
Bond Funds	-	-	-	-
Property Funds	10.143	14.65	10.367	13.88
Total Managed Externally	10.143	14.65	10.367	13.88
Total Treasury Investments	69.251	100	74.669	100
Treasury External Borrowing				
Local Authorities	-	-	-	-
PWLB	63.060	100	63.060	100
Total External Borrowing	63.060	100	63.060	100
Net Treasury Investments/(Borrowing)	6.191		11.609	

The Council's forward projections for borrowing are summarised below. The table shows the actual external debt, against the underlying capital borrowing need (the Capital Financing Requirement -

CFR), highlighting any over or under borrowing.

Treasury Portfolio	2023/24 Actual £000's	2024/25 Estimate £000's	2025/26 Estimate £000's	2026/27 Estimate £000's	2027/28 Estimate £000's
External Debt					
Debt at 1st April	63.060	63.060	63.060	63.060	63.060
Expected change in Debt	-	-	-	-	-
Actual gross debt at 31st March	63.060	63.060	63.060	63.060	63.060
The Capital Financing Requirement	74.600	74.999	80.049	82.810	85.097
Under / (over) borrowing	11.540	11.939	16.989	19.750	22.037

Within the range of prudential indicators there are a number of key indicators to ensure that the Council operates its activities within well defined limits. One of these is that the Council needs to ensure that its gross debt does not, except in the short term, exceed the total of the CFR in the preceding year plus the estimates of any additional CFR for 2025/26 and the following two financial years. This allows some flexibility for limited early borrowing for future years but ensures that borrowing is not undertaken for revenue or speculative purposes.

The Interim Executive Director Finance (the Section 151 Officer) reports that the Council complied with this prudential indicator in the current year and does not envisage difficulties for the future. This view takes into account current commitments, existing plans, and the proposals in this budget report.

3.2. Treasury Indicators: Limits to Borrowing Activity

The Operational Boundary - This is the limit beyond which external debt is not normally expected to exceed. In most cases, this would be a similar figure to the CFR, but may be lower or higher depending on the levels of actual debt and the ability to fund under-borrowing by other cash resources.

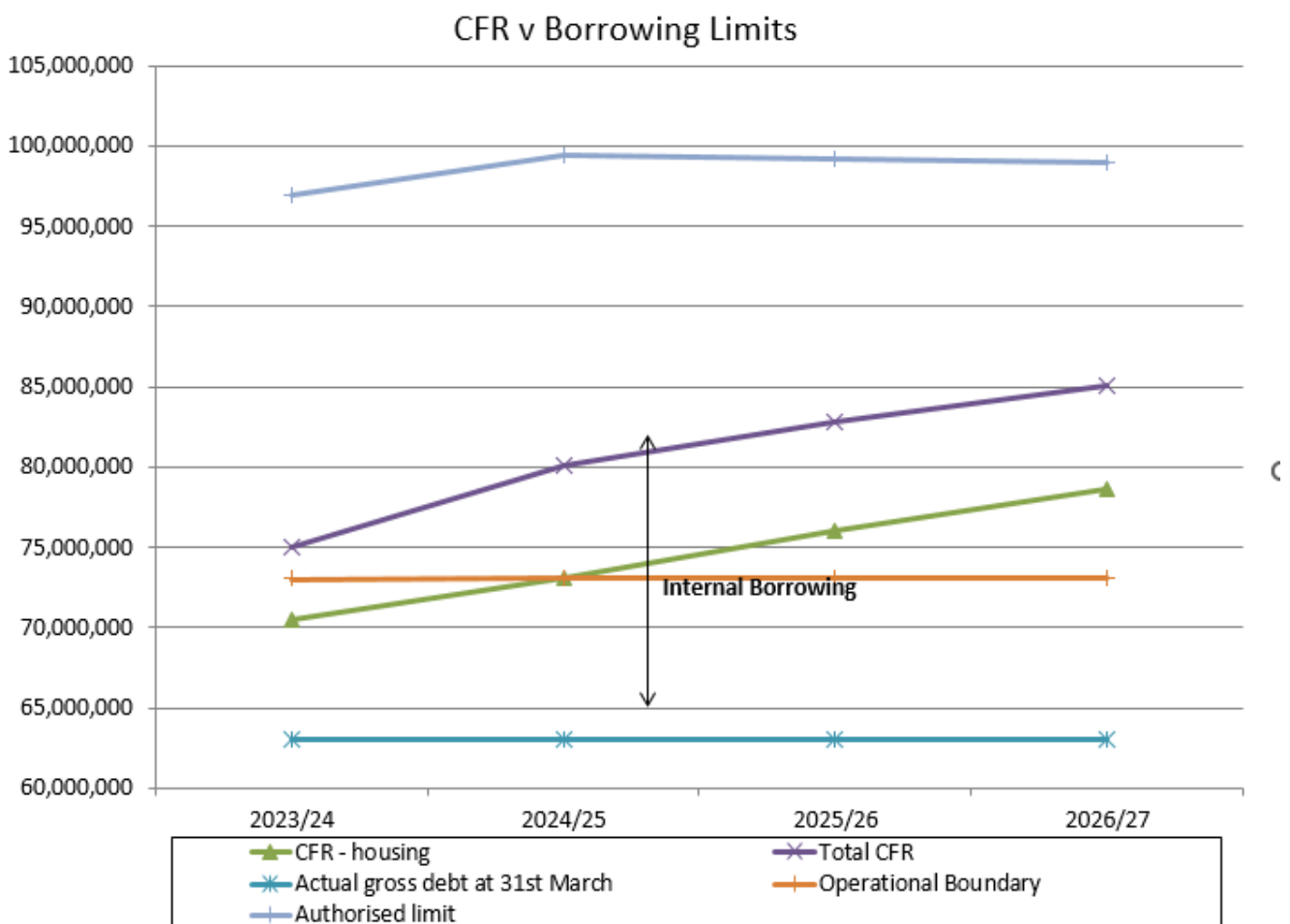
Operational Boundary	2024/25 Estimate £m	2025/26 Estimate £m	2026/27 Estimate £m	2027/28 Estimate £m
Borrowing	63.060	63.060	63.060	63.060
Other long term liabilities	10.000	10.000	10.000	10.000
Commercial Activities/non-financial Investments	-	-	-	-
Total	73.060	73.060	73.060	73.060

The Authorised Limit for external debt – This is a key prudential indicator and represents a control on the maximum level of borrowing. This represents a legal limit beyond which external debt is prohibited, and this limit needs to be set or revised by the full Council. It reflects the level of external debt which, while not desired, could be afforded in the short term, but is not sustainable in the longer term.

This is the statutory limit determined under section 3 (1) of the Local Government Act 2003. The Government retains an option to control either the total of all councils' plans, or those of a specific council, although this power has not yet been exercised.

The Council is asked to approve the following Authorised Limit:

Authorised limit	2024/25 Estimate £m	2025/26 Estimate £m	2026/27 Estimate £m	2027/28 Estimate £m
Borrowing	96.899	99.399	99.233	98.932
Total	96.899	99.399	99.233	98.932



3.3. Prospects for Interest Rates

The Council has appointed MUFG Corporate Markets as its Treasury Advisor and part of their service is to assist the Council to formulate a view on interest rates. MUFG Corporate Markets provided the following forecasts on 11th November 2024. These are forecasts for Bank Rate, average earnings and PWLB certainty rates, gilt yields plus 80 bps.

MUFG Corporate Markets Interest Rate View 11.11.24													
	Dec-24	Mar-25	Jun-25	Sep-25	Dec-25	Mar-26	Jun-26	Sep-26	Dec-26	Mar-27	Jun-27	Sep-27	Dec-27
BANK RATE	4.75	4.50	4.25	4.00	4.00	3.75	3.75	3.75	3.50	3.50	3.50	3.50	3.50
3 month ave earnings	4.70	4.50	4.30	4.00	4.00	4.00	3.80	3.80	3.80	3.50	3.50	3.50	3.50
6 month ave earnings	4.70	4.40	4.20	3.90	3.90	3.90	3.80	3.80	3.80	3.50	3.50	3.50	3.50
12 month ave earnings	4.70	4.40	4.20	3.90	3.90	3.90	3.80	3.80	3.80	3.50	3.50	3.50	3.50
5 yr PWLB	5.00	4.90	4.80	4.60	4.50	4.50	4.40	4.30	4.20	4.10	4.00	4.00	3.90
10 yr PWLB	5.30	5.10	5.00	4.80	4.80	4.70	4.50	4.50	4.40	4.30	4.20	4.20	4.10
25 yr PWLB	5.60	5.50	5.40	5.30	5.20	5.10	5.00	4.90	4.80	4.70	4.60	4.50	4.50
50 yr PWLB	5.40	5.30	5.20	5.10	5.00	4.90	4.80	4.70	4.60	4.50	4.40	4.30	4.30

Additional notes by MUFG Corporate Markets on this forecast table: -

- Following the 30 October Budget, the outcome of the US Presidential election on 6 November, and the 25bps Bank Rate cut undertaken by the Monetary Policy Committee (MPC) on 7 November, we have significantly revised our central forecasts for the first time since May. In summary, our Bank Rate forecast is now 50bps – 75bps higher than was previously the case, whilst our PWLB forecasts have been materially lifted to not only reflect our increased concerns around the future path of inflation, but also the increased level of Government borrowing over the term of the current Parliament.
- If we reflect on the 30 October Budget, our central case is that those policy announcements will be inflationary, at least in the near-term. The Office for Budgetary Responsibility and the Bank of England concur with that view. The latter have the CPI measure of inflation hitting 2.5% y/y by the end of 2024 and staying sticky until at least 2026. The Bank forecasts CPI to be 2.7% y/y (Q4 2025) and 2.2% (Q4 2026) before dropping back in 2027 to 1.8% y/y.
- The anticipated major investment in the public sector, according to the Bank, is expected to lift UK real GDP to 1.7% in 2025 before growth moderates in 2026 and 2027. The debate around whether the Government's policies lead to a material uptick in growth primarily focus on the logistics of fast-tracking planning permissions, identifying sufficient skilled labour to undertake a resurgence in building, and an increase in the employee participation rate within the economy.
- There are inherent risks to all the above. The worst-case scenario would see systemic blockages of planning permissions and the inability to identify and resource the additional workforce required to deliver large-scale IT, housing and infrastructure projects. This would lead to upside risks to inflation, an increased prospect of further Government borrowing & tax rises, and a tepid GDP performance.
- Our central view is that monetary policy is sufficiently tight at present to cater for some further moderate loosening, the extent of which, however, will continue to be data dependent. We forecast the next reduction in Bank Rate to be made in February and for a pattern to evolve whereby rate cuts are made quarterly and in keeping with the release of the Bank's Quarterly Monetary Policy Reports (February, May, August and November).
- Any movement below a 4% Bank Rate will, nonetheless, be very much dependent on inflation data in the second half of 2025. The fact that the November MPC rate cut decision saw a split vote of 8-1 confirms that there are already some concerns around inflation's stickiness, and with recent public sector wage increases beginning to funnel their way into headline average earnings data, the market will be looking very closely at those releases.

- Regarding our PWLB forecast, the short to medium part of the curve is forecast to remain elevated over the course of the next year, and the degree to which rates moderate will be tied to the arguments for further Bank Rate loosening or otherwise. The longer part of the curve will also be impacted by inflation factors, but there is also the additional concern that with other major developed economies such as the US and France looking to run large budget deficits there could be a glut of government debt issuance that investors will only agree to digest if the interest rates paid provide sufficient reward for that scenario.
- So far, we have made little mention of the US President election. Nonetheless, Donald Trump's victory paves the way for the introduction/extension of tariffs that could prove inflationary whilst the same could be said of further tax cuts and an expansion of the current US budget deficit. Invariably the direction of US Treasury yields in reaction to his core policies will, in all probability, impact UK gilt yields. So, there are domestic and international factors that could impact PWLB rates whilst, as a general comment, geopolitical risks abound in Europe, the Middle East and Asia.
- Our revised PWLB rate forecasts below are based on the Certainty Rate (the standard rate minus 20 bps) which has been accessible to most authorities since 1 November 2012. Please note, the lower Housing Revenue Account (HRA) PWLB rate started on 15 June 2023 for those authorities with an HRA (standard rate minus 60 bps)

Gilt yields and PWLB rates - MUFG Forecasts

The overall longer-run trend is for gilt yields and PWLB rates to fall back over the timeline of our forecasts, but the risks to our forecasts are to the upsides.

Our target borrowing rates are set **two years forward** (as we expect rates to fall back) and the current PWLB (certainty) borrowing rates are set out below: -

PWLB debt	Current borrowing rate as at 11.11.24 p.m.	Target borrowing rate now (end of Q3 2026)	Target borrowing rate previous (end of Q3 2026)
5 years	5.02%	4.30%	3.90%
10 years	5.23%	4.50%	4.10%
25 years	5.66%	4.90%	4.40%
50 years	5.42%	4.70%	4.20%

Borrowing advice: Our long-term (beyond 10 years) forecast for Bank Rate has been increased to 3.25% (from 3%). As all PWLB certainty rates are currently significantly above this level, borrowing strategies will need to be reviewed in that context. Overall, better value can be obtained at the shorter end of the curve and short-dated fixed LA to LA monies should also be considered. Temporary borrowing rates will, generally, fall in line with Bank Rate cuts.

Our suggested budgeted earnings rates for investments up to about three months' duration in each financial year are set out below: -

Average earnings in each year	Now	Previously
-------------------------------	-----	------------

2024/25 (residual)	4.60%	4.25%
2025/26	4.10%	3.35%
2026/27	3.70%	3.10%
2027/28	3.50%	3.25%
2028/29	3.50%	3.25%
Years 6 to 10	3.50%	3.25%
Years 10+	3.50%	3.50%

We will continue to monitor economic and market developments as they unfold. Typically, we formally review our forecasts following the quarterly release of the Bank of England's Monetary Policy Report but will consider our position on an ad hoc basis as required.

Our interest rate forecast for Bank Rate is in steps of 25 bps, whereas PWLB forecasts have been rounded to the nearest 10 bps and are central forecasts within bands of + / - 25 bps. Naturally, we continue to monitor events and will update our forecasts as and when appropriate.

3.4 Borrowing Strategy

The Council is currently maintaining an under-borrowed position. This means that the capital borrowing need (the Capital Financing Requirement), has not been fully funded with loan debt, as cash supporting the Council's reserves, balances and cash flow has been used as a temporary measure. This strategy is prudent as medium and longer dated borrowing rates are expected to fall from their current levels, albeit only once prevailing inflation concerns are addressed by restrictive near-term monetary policy. That is, Bank Rate remains relatively elevated in 2025 even if some rate cuts arise.

Against this background and the risks within the economic forecast, caution will be adopted with the 2024/25 treasury operations. The Executive Director Finance will monitor interest rates in financial markets and adopt a pragmatic approach to changing circumstances:

- *if it was felt that there was a significant risk of a sharp FALL in borrowing rates, then borrowing will be postponed.*
- *if it was felt that there was a significant risk of a much sharper RISE in borrowing rates than that currently forecast, fixed rate funding will be drawn whilst interest rates are lower than they are projected to be in the next few years.*

Any decisions will be reported to Council at the next available opportunity.

3.5 Policy on Borrowing in Advance of Need

The Council will not borrow more than or in advance of its needs purely in order to profit from the investment of the extra sums borrowed. Any decision to borrow in advance will be within forward approved Capital Financing Requirement estimates, and will be considered carefully to ensure that value for money can be demonstrated and that the Council can ensure the security of such funds.

Risks associated with any borrowing in advance activity will be subject to prior appraisal and subsequent reporting through the mid-year or annual reporting mechanism.

3.6. Debt Rescheduling

Rescheduling of current borrowing in our debt portfolio may be considered whilst premature redemption rates remain elevated but only if there is surplus cash available to facilitate any repayment, or rebalancing of the portfolio to provide more certainty is considered appropriate. If rescheduling was to be done, it will be reported to the Council at the earliest meeting following its action.

3.7 New Financial Institutions as a Source of Borrowing and Types of Borrowing

Currently the PWLB Certainty Rate is set at gilts + 80 basis points. However, consideration may still need to be given to sourcing funding from the following sources for the following reasons:

- Local authorities (primarily shorter dated maturities out to 3 years or so – generally still cheaper than the Certainty Rate).
- Financial institutions (primarily insurance companies and pension funds but also some banks, out of forward dates where the objective is to avoid a “cost of carry” or to achieve refinancing certainty over the next few years)
- UK Municipal Bonds Agency
- UK National Wealth Fund

Our advisors will keep us informed as to the relative merits of each of these alternative funding sources.

3.8 Approved Sources of Long and Short term Borrowing

On Balance Sheet	Fixed	Variable
PWLB	●	●
UK Municipal Bond Agency	●	●
Local Authorities	●	●
Banks	●	●
Pension Funds	●	●
Insurance Companies	●	●
UK National Wealth Fund	●	●
Market (long-term)	●	●
Market (temporary)	●	●

Market (LOBOs)	●	●
Stock Issues	●	●
Local Temporary	●	●
Local Bonds	●	
Local Authority Bills	●	●
Overdraft		●
Negotiable Bonds	●	●
Internal (capital receipts & revenue balances)	●	●
Commercial Paper	●	
Medium Term Notes	●	
Finance Leases	●	●

4. ANNUAL INVESTMENT STRATEGY

4.1 Investment Policy – Management of Risk

The Ministry of Housing, Communities and Local Government (MHCLG)) and CIPFA have extended the meaning of ‘investments’ to include both financial and non-financial investments. This report deals solely with treasury (financial) investments (as managed by the treasury management team). Non-financial investments, essentially the purchase of income yielding assets, are covered in the Capital Strategy.

The Council’s investment policy has regard to the following:-

- MHCLG’s Guidance on Local Government Investments (“the Guidance”)
- CIPFA Treasury Management in Public Services Code of Practice and Cross Sectoral Guidance Notes 2021 (“the Code”)
- CIPFA Treasury Management Guidance Notes 2021

The Council’s investment priorities will be security first, portfolio liquidity second, and then yield (return). The Council will aim to achieve the optimum return (yield) on its investments commensurate with proper levels of security and liquidity and with regard to the Council’s risk appetite.

In the current economic climate, it is considered appropriate to maintain a degree of liquidity to cover cash flow needs but to also consider “laddering” investments for periods up to 12 months with high credit rated financial institutions, whilst investment rates remain elevated.

The above guidance from the MHCLG and CIPFA places a high priority on the management of risk. This Council has adopted a prudent approach to managing risk and defines its risk appetite by the following means:-

- 1) Minimum acceptable **credit criteria** are applied in order to generate a list of highly creditworthy counterparties. This also enables diversification and thus avoidance of concentration risk. The key ratings used to monitor counterparties are the Short Term and Long Term ratings.
- 2) **Other Information:** Ratings will not be the sole determinant of the quality of an institution; it is important to continually assess and monitor the financial sector on both a micro and macro basis and in relation to the economic and political environments in which institutions operate. The assessment will also take account of information that reflects the opinion of the markets. To achieve this consideration the Council will engage with its advisors to maintain a monitor on market pricing such as “**credit default swaps**” and overlay that information on top of the credit ratings.
- 3) **Other information sources** used will include the financial press, share price and other such information pertaining to the financial sector in order to establish the most robust scrutiny process on the suitability of potential investment counterparties.
- 4) This Council has defined the list of **types of investment instruments** that the Treasury Management team are authorised to use. There are two lists in Annex 4 under the categories of ‘specified’ and ‘non-specified’ investments.
 - **Specified investments** are those with a high level of credit quality and subject to a maturity limit of one year, or have less than a year left to run to maturity, if they were originally classified as being non-specified investments solely due to the maturity period exceeding one year.
 - **Non-specified investments** are those with less high credit quality, may be for periods in excess of one year, and/or are more complex instruments which require greater consideration by members and officers before being authorised for use.
- 5) **Non-specified investments limit.** The Council has determined that it will set a limit to the maximum exposure of the total treasury management investment portfolio to non-specified treasury management of 35% (see paragraph 4.3)
- 6) **Lending limits** (amounts and maturity) for each counterparty will be set though applying the matrix table in paragraph 4.2
- 7) **Transaction limits** are set for each type of investment in 4.2
- 8) This Council will set a limit for the amount of its investments which are invested for **longer than 365 days** (see paragraph 4.4)
- 9) Investments will only be placed with counterparties from countries with a specified minimum **sovereign rating** (see paragraph 4.3)
- 10) This Council has engaged **external consultants** (see paragraph 1.6) to provide expert advice on how to optimise an appropriate balance of security, liquidity and yield, given the

risk appetite of this Council in the context of the expected level of cash balances and need for liquidity throughout the year.

- 11) All investments will be denominated in **sterling**.
- 12) As a result of the change in accounting standards for 2023/24 under IFRS 9, this Council will consider the implications of investment instruments which could result in an adverse movement in the value of the amount invested and resultant charges at the end of the year to the General Fund. (In November 2018, the MHCLG concluded a consultation for a temporary override to allow English local authorities time to adjust their portfolio of all pooled investments by announcing a statutory override to delay implementation of IFRS 9 for five years ending 31.3.23. Subsequently, a further extension to the override to 31.3.25 was agreed by Government).
- 13) This Council will also pursue **value for money** in treasury management and will monitor the yield from investment income against appropriate benchmarks for investment performance (see paragraph 4.5). Regular monitoring of investment performance will be carried out during the year.

Changes in risk management policy from last year. The above criteria are unchanged from last year.

4.2 Creditworthiness Policy

This Council applies the creditworthiness service provided by MUFG Corporate Markets. This service employs a sophisticated modelling approach utilising credit ratings from the three main credit rating agencies - Fitch, Moody's and Standard and Poor's. The credit ratings of counterparties are supplemented with the following overlays:

- 'watches' and 'outlooks' from credit rating agencies;
- CDS spreads that may give early warning of changes in credit ratings;
- sovereign ratings to select counterparties from only the most creditworthy countries.

This modelling approach combines credit ratings, and any assigned watches and outlooks in a weighted scoring system which is then combined with an overlay of CDS spreads. The end product of this is a series of colour coded bands which indicate the relative creditworthiness of counterparties. These colour codes are used by the Council to determine the suggested duration for investments. The Council will therefore use counterparties within the following durational bands:

- Yellow 5 years *
- Dark pink 5 years for Ultra-Short Dated Bond Funds with a credit score of 1.25
- Light pink 5 years for Ultra-Short Dated Bond Funds with a credit score of 1.5
- Purple 2 years
- Blue 1 year (only applies to nationalised or semi nationalised UK Banks)
- Orange 1 year

- Red 6 months
- Green 100 days
- No colour not to be used

Y	Pi1	Pi2	P	B	O	R	G	N/C
1	1.25	1.5	2	3	4	5	6	7
Up to 5yrs	Up to 5yrs	Up to 5yrs	Up to 2yrs	Up to 1yr	Up to 1yr	Up to 6mths	Up to 100days	No Colour

The MUFG Corporate Markets creditworthiness service uses a wider array of information other than just primary ratings. Furthermore, by using a risk weighted scoring system, it does not give undue preponderance to just one agency's ratings.

Typically the minimum credit ratings criteria the Council uses will be a short term rating (Fitch or equivalents) of F1 and a Long Term rating of A-. There may be occasions when the counterparty ratings from one rating agency are marginally lower than these ratings but may still be used. In these instances consideration will be given to the whole range of ratings available, or other topical market information, to support their use.

All credit ratings will be monitored on a daily basis/as and when notified. The Council is alerted to changes to ratings of all three agencies through its use of the MUFG creditworthiness service:

- if a downgrade results in the counterparty/investment scheme no longer meeting the Council's minimum criteria, its further use as a new investment will be withdrawn immediately;
- in addition to the use of credit ratings the Council will be advised of information in movements in Credit Default Swap spreads against the iTraxx European Senior Financials benchmark and other market data on a daily basis via its Passport website, provided exclusively to it by MUFG. Extreme market movements may result in downgrade of an institution or removal from the Council's lending list.

Sole reliance will not be placed on the use of this external service. In addition this Council will also use market data and market information, as well as information on any external support for banks, to help support its decision making process.

Counterparty	Colour (and long term rating where applicable)	Money and/or % Limit	Time Limit
Banks/Building Societies *	Yellow	£10m	5yrs
Banks/Building Societies	Purple	£10m	2 yrs
Banks/Building Societies	Orange	£10m	1 yr
Banks – part nationalised	Blue	£10m	1 yr

Banks/Building Societies	Red	£10m	6 mths
Banks/Building Societies	Green	£10m	100 days
Banks/Building Societies	No colour	Not to be used	
Council's banker (where "No Colour")	No colour	£2m	1 day
DMADF	UK sovereign rating	£10m	6 months
Local authorities	n/a	£10m	5yrs
	Fund Rating **	Money and/or % Limit	Time Limit
Money Market Funds CNAV	AAA	£10m	Liquid
Money Market Funds LVNAV	AAA	£10m	Liquid
Money Market Funds VNAV	AAA	£10m	Liquid
Ultra-Short Dated Bond Funds with a credit score of 1.25	Dark pink / AAA	£10m	Liquid
Ultra-Short Dated Bond Funds with a credit score of 1.50	Light pink / AAA	£10m	Liquid

* The yellow colour category is for UK Government debt, or its equivalent, money market funds and collateralised deposits where the collateral is UK Government debt – see Annex 4.

** 'Fund' ratings are different to individual counterparty ratings, coming under either specific 'MMF' or 'Bond Fund' rating criteria.

Creditworthiness

Significant levels of downgrades to Short and Long-Term credit ratings have not materialised since the crisis in March 2020. In the main, where they did change, any alterations were limited

to Outlooks. Nonetheless, when setting minimum sovereign debt ratings, this Council will not set a minimum rating for the UK.

CDS prices

Although bank CDS prices, (these are market indicators of credit risk), spiked upwards during the days of the Truss/Kwarteng government in the autumn of 2022, they have returned to more average levels since then. However, sentiment can easily shift, so it will remain important to undertake continual monitoring of all aspects of risk and return in the current circumstances. MUFG monitor CDS prices as part of their creditworthiness service to local authorities and the Council has access to this information via its MUFG-provided Passport portal.

4.3 Other Limits

Due care will be taken to consider the exposure of the Council's total investment portfolio to non-specified investments, countries, groups and sectors.

- a) **Non-specified treasury management investment limit.** The Council has determined that it will limit the maximum total exposure of treasury management investments to non-specified treasury management investments as being 35% of the total treasury management investment portfolio.
- b) **Country limit.** The Council has determined that it will only use approved counterparties from the UK and from countries with a minimum sovereign credit rating of 'AA-' from Fitch. The list of countries that qualify using this credit criteria as at the date of this report are shown in Annex 5. This list will be added to, or deducted from, by officers should ratings change in accordance with this policy.
- c) **Other limits.** In addition:-
 - no more than 25% will be placed with any non-UK country at any time;
 - a limit of £14m per group will apply to a group of companies;
 - sector limits will be monitored regularly for appropriateness.

4.4 Investment Strategy

In-house funds. Investments will be made with reference to the core balance and cash flow requirements and the outlook for short-term interest rates (i.e., rates for investments up to 12 months). Greater returns are usually obtainable by investing for longer periods. The current shape of the yield curve suggests that the risks are relatively balanced between Bank Rate staying higher for longer, if inflation picks up markedly through 2025 post the 30 October 2024 Budget, or it may be cut quicker than expected if the economy stagnates. The economy only grew 0.1% in Q3 2024, but the CPI measure of inflation is now markedly above the 2% target rate set by the Bank of England's Monetary Policy Committee two to three years forward.

Accordingly, while most cash balances are required in order to manage the ups and downs of cash flows, where cash sums can be identified that could be invested for longer periods, the value to be obtained from longer term investments will be carefully assessed.

Investment Returns Expectations

The current forecast shown in paragraph 3.3, includes a forecast for Bank Rate to fall to a low of 3.5%.

The suggested budgeted investment earnings rates for returns on investments placed for periods up to about three months during each financial year are as follows: -

Average earnings in each year	Now	Previously
2024/25 (residual)	4.60%	4.25%
2025/26	4.10%	3.35%
2026/27	3.70%	3.10%
2027/28	3.50%	3.25%
2028/29	3.50%	3.25%
Years 6 to 10	3.50%	3.25%
Years 10+	3.50%	3.50%

As there are so many variables at this time, caution must be exercised in respect of all interest rate forecasts.

For its cash flow generated balances, the Council will seek to utilise its business reserve instant access and notice accounts, money market funds and short-dated deposits (overnight to 100 days) in order to benefit from the compounding of interest.

Investment Treasury Indicator and Limit - total principal funds invested for greater than 365 days. These limits are set with regard to the Council's liquidity requirements and to reduce the need for early sale of an investment, and are based on the availability of funds after each year-end.

The Council is asked to approve the treasury indicator and limit: -

Upper limit for principal sums invested for longer than 365 days			
	2025/26 £m	2026/27 £m	2027/28 £m
Principal sums invested > 365 days	6.663	4.131	4.163
Current investments as at 31.12.24 in excess of 1 year maturing in each year	-	-	-

4.5 Investment Performance/Risk Benchmarking

This Council will use an investment benchmark to assess the investment performance of its investment portfolio of 3 month SONIA.

4.6 End of year investment report

At the end of the financial year, the Council will report on its investment activity as part of its Annual Treasury Report.

5. ANNEXES

1. Prudential and Treasury Indicators
2. Interest Rate Forecasts
3. Economic Background
4. TMP 1 Credit & Counterparty Risk Management
5. Approved Countries for investments
6. Treasury Management Scheme of Delegation
7. The Treasury Management Role of the Section 151 Officer
8. Treasury Management Practices
9. Treasury Management Glossary of Terms
10. Prudential Indicators – Definitions/Interpretation

ANNEX 1

THE CAPITAL PRUDENTIAL AND TREASURY INDICATORS 2025/26 – 2027/28

The Council's capital expenditure plans are the key driver of treasury management activity. The output of the capital expenditure plans is reflected in the prudential indicators, which are designed to assist members' overview and confirm capital expenditure plans.

1 Capital expenditure

A breakdown of capital expenditure by Directorate is detailed within the Performance Healthcheck reported quarterly to Cabinet.

2 Affordability Prudential Indicators

The previous sections cover the overall capital and control of borrowing prudential indicators, but within this framework prudential indicators are required to assess the affordability of the capital investment plans. These provide an indication of the impact of the capital investment plans on the Council's overall finances. The Council is asked to approve the following indicators:

a) Ratio of financing costs to net revenue stream.

This indicator identifies the trend in the cost of capital (borrowing and other long term obligation costs net of investment income) against the net revenue stream (net cost of services).

Ratio of financing costs to net revenue stream.	2023/24 Actual %	2024/25 Estimate %	2025/26 Estimate %	2026/27 Estimate %	2027/28 Estimate %
Non-HRA	(32.87)%	(34.32)%	(18.21)%	(5.53)%	(4.03)%
HRA	26.99%	26.96%	27.11%	26.66%	26.03%
Commercial Activities/non-Financial Investments	(5.97)%	(4.98)%	(4.55)%	(3.28)%	(3.26)%

The estimates of financing costs include current commitments and the proposals in this budget report.

Commercial Activities/non-Financial Investments includes investments in property funds.

b) Housing Revenue Account Debt Ratios

HRA Debt to Revenues Ratio	2023/24	2024/25	2025/26	2026/27	2027/28
	Actual	Estimate	Estimate	Estimate	Estimate
HRA Debt £m	70.507	70.507	73.057	75.984	78.572
HRA Revenues £m	21.301	23.586	23.618	24.246	24.892
Ratio of Debt to Revenues %	331	299	309	313	316

HRA Debt per Dwelling	2023/24	2024/25	2025/26	2026/27	2027/28
	Actual	Estimate	Estimate	Estimate	Estimate
HRA Debt £m	70.507	70.507	73.057	75.984	78.572
Number of HRA Dwellings	4,072	4,026	4,006	3,986	3,966
Debt per Dwelling £'000	17.315	17.513	18.237	19.063	19.811

4 Maturity Structure of Borrowing

These gross limits are set to reduce the Council's exposure to large, fixed rate sums falling due for refinancing, and are required for upper and lower limits.

The Council is asked to approve the following treasury indicators and limits:

Maturity structure of Fixed Interest Rate borrowing 2024/25		
Timeline	Lower	Upper
Under 12 months	0%	20%
12 months to 2 years	0%	20%
2 years to 5 years	0%	25%
5 years to 10 years	0%	75%
10 years and above	0%	100%

Maturity structure of Variable Interest Rate borrowing 2024/25		
Timeline	Lower	Upper
Under 12 months	0%	20%
12 months to 2 years	0%	20%
2 years to 5 years	0%	25%
5 years to 10 years	0%	75%
10 years and above	0%	100%

5. Control of Interest Rate Exposure

Please see paragraphs 3.3, 3.4 and 4.4

ANNEX 2 INTEREST RATE FORECASTS 2024-2027

MUFG Corporate Markets Interest Rate View 11.11.24													
	Dec-24	Mar-25	Jun-25	Sep-25	Dec-25	Mar-26	Jun-26	Sep-26	Dec-26	Mar-27	Jun-27	Sep-27	Dec-27
BANK RATE	4.75	4.50	4.25	4.00	4.00	3.75	3.75	3.75	3.50	3.50	3.50	3.50	3.50
3 month ave earnings	4.70	4.50	4.30	4.00	4.00	4.00	3.80	3.80	3.80	3.50	3.50	3.50	3.50
6 month ave earnings	4.70	4.40	4.20	3.90	3.90	3.90	3.80	3.80	3.80	3.50	3.50	3.50	3.50
12 month ave earnings	4.70	4.40	4.20	3.90	3.90	3.90	3.80	3.80	3.80	3.50	3.50	3.50	3.50
5 yr PWLB	5.00	4.90	4.80	4.60	4.50	4.50	4.40	4.30	4.20	4.10	4.00	4.00	3.90
10 yr PWLB	5.30	5.10	5.00	4.80	4.80	4.70	4.50	4.50	4.40	4.30	4.20	4.20	4.10
25 yr PWLB	5.60	5.50	5.40	5.30	5.20	5.10	5.00	4.90	4.80	4.70	4.60	4.50	4.50
50 yr PWLB	5.40	5.30	5.20	5.10	5.00	4.90	4.80	4.70	4.60	4.50	4.40	4.30	4.30

PWLB forecasts are based on PWLB certainty rates.

ANNEX 3 ECONOMIC BACKGROUND

The third quarter of 2024 (July to September) saw:

- GDP growth stagnating in July following downwardly revised Q2 figures (0.5% q/q)
- A further easing in wage growth as the headline 3myy rate (including bonuses) fell from 4.6% in June to 4.0% in July;
- CPI inflation hitting its target in June before edging above it to 2.2% in July and August;
- Core CPI inflation increasing from 3.3% in July to 3.6% in August;
- The Bank of England initiating its easing cycle by lowering interest rates from 5.25% to 5.0% in August and holding them steady in its September meeting;
- 10-year gilt yields falling to 4.0% in September.

Over the aforementioned period, the economy's stagnation in June and July pointed more to a mild slowdown in UK GDP growth than a sudden drop back into a recession. However, in the interim period, to 12 December, arguably the biggest impact on the economy's performance has been the negative market sentiment in respect of the fallout from the Chancellor's Budget on 30 October.

If we reflect on the 30 October Budget, our central case is that those policy announcements will prove to be inflationary, at least in the near-term. The Office for Budgetary Responsibility and the Bank of England concur with that view. The latter have the CPI measure of inflation hitting 2.5% y/y by the end of 2024 and staying sticky until at least 2026. The Bank forecasts CPI to be elevated at 2.7% y/y (Q4 2025) before dropping back to sub-2% in 2027. Nonetheless, since the Budget, the October inflation print has shown the CPI measure of inflation bouncing up to 2.3% y/y with the prospect that it will be close to 3% by the end of the year before falling back slowly through 2025. The RPI measure has also increased significantly to 3.4% y/y.

How high inflation goes will primarily be determined by several key factors. First amongst those is that the major investment in the public sector, according to the Bank of England, will lift UK real GDP to 1.7% in 2025 before growth moderates in 2026 and 2027. The debate around whether the Government's policies lead to a material uptick in growth primarily focus on the logistics of fast-tracking planning permissions, identifying sufficient skilled labour to undertake a resurgence in building, and an increase in the employee participation rate within the economy.

There are inherent risks to all the above. The worst-case scenario would see systemic blockages of planning permissions and the inability to identify and resource the additional workforce required to deliver large-scale IT, housing and infrastructure projects. This would lead to upside risks to inflation, an increased prospect of further Government borrowing & tax rises in the June 2025 Spending Review (pushed back from the end of March), and a tepid GDP performance.

Regarding having a sufficiently large pool of flexible and healthy workers, the initial outlook does not look bright. Research from Capital Economics has alluded to an increase of some 500,000 construction workers being needed to provide any chance of the Government hitting its target of 300,000 new homes being built in each of the next five years (234,000 net additional dwellings in England in 2022/23). But the last time such an increase was needed,

and construction employment is currently at a nine-year low, it took 12 years to get there (1996 to 2008). Also note, as of October 2024, job vacancies in the construction sector were still higher than at any time in the 20 years preceding the pandemic.

Currently, it also seems likely that net inward migration is set to fall, so there is likely to be a smaller pool of migrant workers available who, in the past, have filled the requirement for construction worker demand. The Government plans to heavily promote training schemes, particularly to the one million 16- to 24-year-olds who are neither in education nor work. But it is arguable as to whether the employee shortfall can be made up from this source in the requisite time, even if more do enter the workforce.

Against, this backdrop, there may be a near-term boost to inflation caused by a wave of public sector cash chasing the same construction providers over the course of the next year or so, whilst wages remain higher than the Bank currently forecasts because of general labour shortages, including in social care where Government accepts there is a 150,000 shortfall at present.

Unemployment stands at a low 4.3% (September), whilst wages are rising at 4.3% y/y (including bonuses) and 4.8% (excluding bonuses). The Bank would ideally like to see further wage moderation to underpin any further gradual relaxing of monetary policy. Indeed, over the next six months, the market is currently only pricing in Bank Rate reductions in February and May – which would see Bank Rate fall to 4.25% - but further cuts, thereafter, are highly likely to be even more data-dependent.

If we focus on borrowing, a term we are likely to hear throughout 2025 is “bond vigilante”. Essentially, this represents a generic term for when the market is ill at ease with the level of government borrowing and demands a higher return for holding debt issuance. In the UK, we do not need to go back too far to recall the negative market reaction to the Truss/Kwarteng budget of 2022. But long-term borrowing rates have already gradually moved back to those levels since their recent low point in the middle of September 2024. Of course, the UK is not alone in this respect. Concerns prevail as to what the size of the budget deficit will be in the US, following the election of Donald Trump as President, and in France there are on-going struggles to form a government to address a large budget deficit problem too. Throw into the mix the uncertain outcome to German elections, and there is plenty of bond investor concern to be seen.

Staying with the US, Donald Trump’s victory paves the way for the introduction/extension of tariffs that could prove inflationary whilst the same could be said of further tax cuts. Invariably the direction of US Treasury yields in reaction to his core policies will, in all probability, impact UK gilt yields. So, there are domestic and international factors that could impact PWLB rates whilst, as a general comment, geo-political risks continue to abound in Europe, the Middle East and Asia.

In the past month, the US Core CPI measure of inflation has indicated that inflation is still a concern (3.3% y/y, 0.3% m/m), as has the November Producer Prices Data (up 3.0 y/y v a market estimate of 2.6% y/y, 0.4% m/m v an estimate of 0.2% m/m) albeit probably insufficient to deter the FOMC from cutting US rates a further 0.25% at its December meeting. However, with Trump’s inauguration as President being held on 20 January, further rate reductions and their timing will very much be determined by his policy announcements and their implications for both inflation and Treasury issuance.

Looking at gilt movements in the first half of 2024/25, and you will note the 10-year gilt yield declined from 4.32% in May to 4.02% in August as the Bank's August rate cut signalled the start of its loosening cycle. More recently, however, 10 year gilt yields have spiked back up to 4.35%.

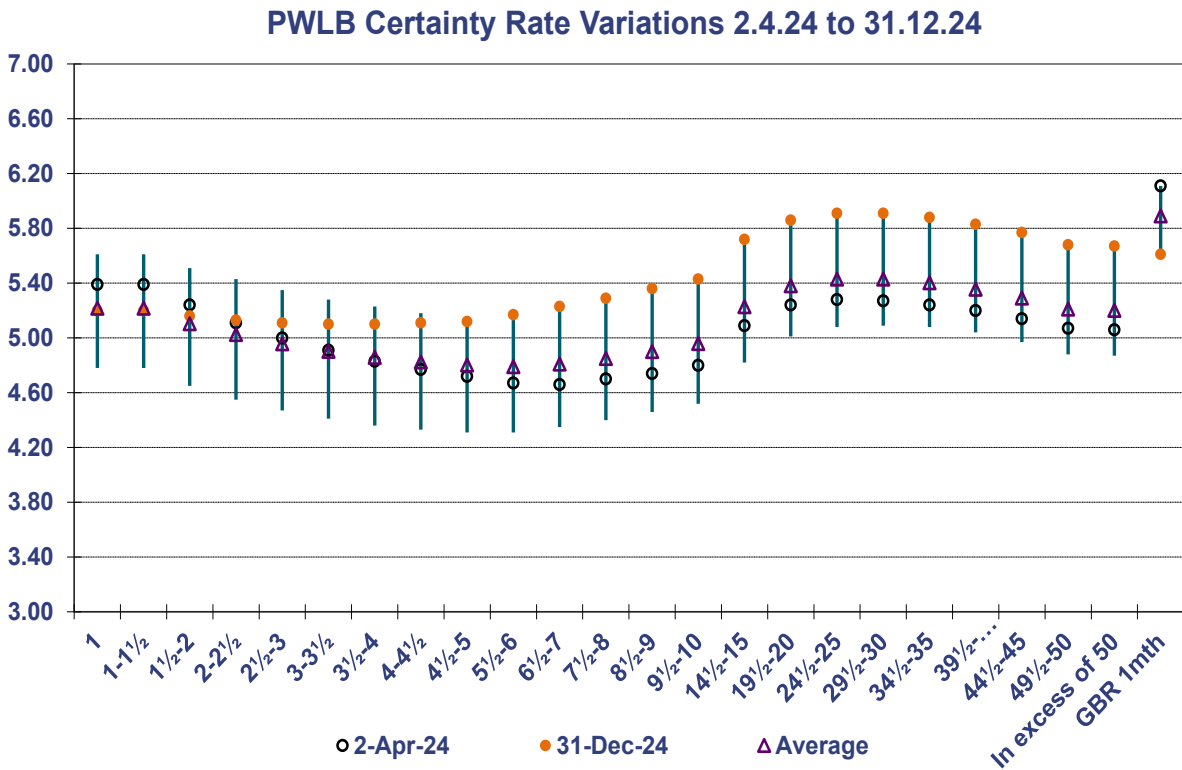
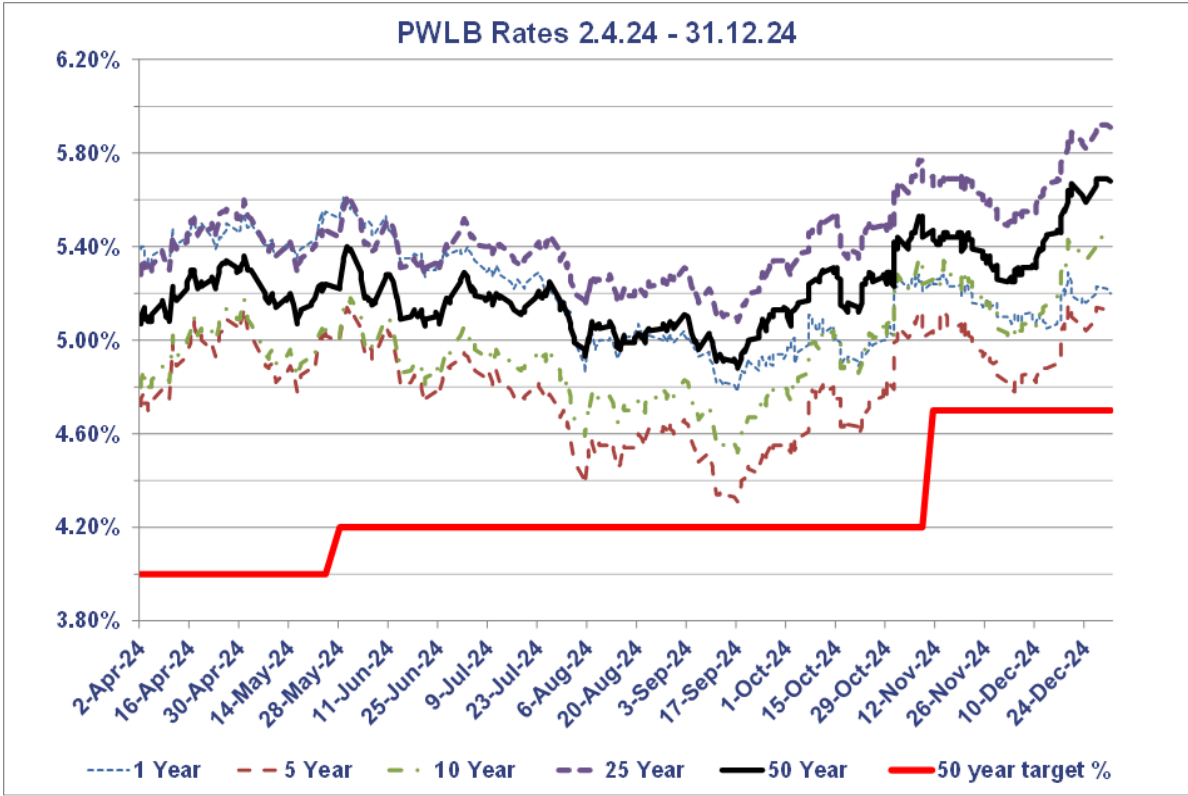
The FTSE 100 reached a peak of 8,380 in the third quarter of 2024 (currently 8,304), but its performance is firmly in the shade of the US S&P500, which has breached the 6,000 threshold on several occasions recently, delivering returns upwards of 25% y/y. The catalyst for any further rally (or not) is likely to be the breadth of AI's impact on business growth and performance.

MPC meetings: 9 May, 20 June, 1 August, 19 September, 7 November 2024

- On 9 May, the Bank of England's Monetary Policy Committee (MPC) voted 7-2 to keep Bank Rate at 5.25%. This outcome was repeated on 20th June.
- However, by the time of the August meeting, there was a 5-4 vote in place for rates to be cut by 25bps to 5%. However, subsequent speeches from MPC members have supported Governor Bailey's tone with its emphasis on "gradual" reductions over time.
- Markets thought there may be an outside chance of a further Bank Rate reduction in September, following the 50bps cut by the FOMC, but this came to nothing.
- On 7 November, Bank Rate was cut by 0.25% to 4.75%. The vote was 8-1 in favour of the cut but the language used by the MPC emphasised "gradual" reductions would be the way ahead with an emphasis on the inflation and employment data releases, as well as geo-political events.

In the chart below, despite a considerable gilt market rally in mid-September, rates finished the period under review higher.

PWLB RATES 02.04.24 - 31.12.24 (note: the 1st April was a bank holiday)



HIGH/LOW/AVERAGE PWLB RATES FOR 02.04.24 – 31.12.24

	1 Year	5 Year	10 Year	25 Year	50 Year
02/04/2024	5.39%	4.72%	4.80%	5.28%	5.07%
31/12/2024	5.20%	5.12%	5.43%	5.91%	5.68%
Low	4.78%	4.31%	4.52%	5.08%	4.88%
Low date	17/09/2024	17/09/2024	17/09/2024	17/09/2024	17/09/2024
High	5.61%	5.16%	5.44%	5.92%	5.69%
High date	29/05/2024	19/12/2024	19/12/2024	19/12/2024	27/12/2024
Average	5.22%	4.80%	4.96%	5.43%	5.21%
Spread	0.83%	0.85%	0.92%	0.84%	0.81%

ANNEX 4 TREASURY MANAGEMENT PRACTICE (TMP1) CREDIT AND COUNTERPARTY RISK MANAGEMENT

SPECIFIED INVESTMENTS: All such investments will be sterling denominated, with **maturities up to maximum of 1 year**, meeting the minimum ‘high’ quality criteria where applicable. (Non-specified investments which would be specified investments apart from originally being for a period longer than 12 months, will be classified as being specified once the remaining period to maturity falls to under twelve months.)

NON-SPECIFIED INVESTMENTS: These are any investments which do not meet the specified investment criteria. A maximum of 35% will be held in aggregate in non-specified investments.

A variety of investment instruments will be used, subject to the credit quality of the institution, and, depending on the type of investment made, it will fall into one of the above categories.

The criteria, time limits and monetary limits applying to institutions or investment vehicles are:

Counterparty	Minimum credit criteria / colour band	£ limit per institution	Max. maturity period
DMADF – UK Government	Yellow	£10m	6 months (max is set by the DMO*)
UK Gilts	Yellow	£10m	5 years
UK Treasury bills	Yellow	£10m	364 days (max is set by the DMO*)
Bonds issued by multilateral development banks	Yellow	£10m	5 years
Money Market Funds CNAV	AAA	£10m	Liquid
Money Market Funds LVNAV	AAA	£10m	Liquid
Money Market Funds VNAV	AAA	£10m	Liquid
Local authorities	Yellow	£10m	5 years
Ultra-Short Dated Bond Funds with a credit score of 1.25	Dark pink / AAA	£10m	Liquid
Ultra-Short Dated Bond Funds with a credit score of 1.50	Light pink / AAA	£10m	Liquid

Counterparty	Minimum credit criteria / colour band	£ limit per institution	Max. maturity period
Term deposits with banks and building societies	Blue	£10m	12 months
	Orange		12 months
	Red		6 months
	Green		100 days
	No Colour		Not for use
CDs or corporate bonds with banks and building societies	Blue	£10m	12 months
	Orange		12 months
	Red		6 months
	Green		100 days
	No Colour		Not for use
Gilt funds	UK sovereign rating	£10m	
Non-Specified Investments			
Property Funds - the use of these instruments can be deemed as capital expenditure and as such will be an application (spending) of capital resources		£10m	Limit will be set based on level of reserves and balances going forward and appropriate due diligence will be undertaken before investment of this type
Wider Investment Funds - the use of these instruments can be deemed as capital expenditure and as such will be an application (spending) of capital resources		£10m	Limit will be set based on level of reserves and balances going forward and appropriate due diligence will be undertaken before investment of this type

* DMO – is the Debt Management Office of HM Treasury

Accounting treatment of investments. The accounting treatment may differ from the underlying cash transactions arising from investment decisions made by this Council. To ensure that the Council is protected from any adverse revenue impact, which may arise from these differences, we will review the accounting implications of new transactions before they are undertaken.

ANNEX 5 APPROVED COUNTRIES FOR INVESTMENT

This list is based on those countries which have sovereign ratings of AA- or higher (showing the lowest rating from Fitch, Moody's and S&P) and also (except - at the time of writing – for Hong Kong and Luxembourg) have banks operating in sterling markets which have credit ratings of green or above in the MUFG credit worthiness service.

Based on lowest available rating

AAA

- Australia
- Denmark
- Germany
- Netherlands
- Norway
- Singapore
- Sweden
- Switzerland

AA+

- Canada
- Finland
- U.S.A.

AA

- Abu Dhabi (UAE)
- Qatar

AA-

- Belgium
- France
- U.K.

ANNEX 6 TREASURY MANAGEMENT SCHEME OF DELEGATION

(i) Full Council

- receiving and reviewing reports on Treasury Management policies, practices and activities.
- approval of annual strategy.
- approval of/amendments to the organisation's adopted clauses, Treasury Management Policy statement and Treasury Management practices.
- budget consideration and approval.
- approval of the division of responsibilities.
- receiving and reviewing regular monitoring reports and acting on recommendations.

(ii) Cabinet

- receiving and reviewing Treasury Management policy statement and Treasury Management practices and making recommendations to the full Council.
- receiving and reviewing regular monitoring reports and making recommendations to the full Council.
- approving the selection of external service providers and agreeing terms of appointment.

(iii) Audit and Governance Committee

- reviewing the Treasury Management policy and procedures and making recommendations to the Cabinet.
- receiving and reviewing regular monitoring and making recommendations to the Cabinet.

ANNEX 7 THE TREASURY MANAGEMENT ROLE OF THE SECTION 151 OFFICER

The S151 (responsible) Officer is responsible for

- recommending clauses, treasury management policy/practices for approval, reviewing the same regularly, and monitoring compliance
- submitting regular treasury management policy reports
- submitting budgets and budget variations
- receiving and reviewing management information reports
- reviewing the performance of the treasury management function
- ensuring the adequacy of treasury management resources and skills, and the effective division of responsibilities within the treasury management function
- ensuring the adequacy of internal audit, and liaising with external audit
- recommending the appointment of external service providers
- preparation of a capital strategy to include capital expenditure, capital financing, non-financial investments and treasury management, with a long term timeframe
- ensuring that the capital strategy is sustainable, affordable and prudent in the long-term and provides value for money
- ensuring that due diligence has been carried out on all treasury and non-financial investments and is in accordance with the risk appetite of the authority
- ensuring that the authority has appropriate legal powers to undertake expenditure on non-financial assets and their financing
- ensuring the proportionality of all investments so that the authority does not undertake a level of investing which exposes the authority to an excessive level of risk compared to its financial resources
- ensuring that an adequate governance process is in place for the approval, monitoring and ongoing risk management of all non-financial investments and long term liabilities
- provision to members of a schedule of all non-treasury investments including material investments in subsidiaries, joint ventures, loans and financial guarantees
- ensuring that members are adequately informed and understand the risk exposures taken on by the authority
- ensuring that the authority has adequate expertise, either in house or externally provided, to carry out the above
- creation of Treasury Management Practices which specifically deal with how non treasury investments will be carried out and managed, to include the following -
 - Risk management (TMP1), including investment and risk management criteria for any material non-treasury investment portfolios;
 - Performance measurement and management (TMP2), including methodology and criteria for assessing the performance and success of non-treasury investments;

- Decision making, governance and organisation (TMP5), including a statement of the governance requirements for decision making in relation to non-treasury investments; and arrangements to ensure that appropriate professional due diligence is carried out to support decision making;
- Reporting and management information (TMP6), including where and how often monitoring reports are taken;
- Training and qualifications (TMP10), including how the relevant knowledge and skills in relation to non-treasury investments will be arranged.

ANNEX 8 TREASURY MANAGEMENT PRACTICES

The Treasury Management Practices document (TMPs) forms detailed operational procedures and processes for the Treasury Management function. This document can be found on the Council's Internet by following the following link;

<http://www.tamworth.gov.uk/treasury-practices>

and clicking on the TMPs folder.

The items below are summaries of the individual TMPs which the Council has to produce and adopt under the Treasury Code of Practice.

TMP1 : RISK MANAGEMENT

General Statement

The Section 151 Officer will design, implement and monitor all arrangements for the identification, management and control of Treasury Management risk; will report at least annually on the adequacy/suitability of the arrangements and will report, as a matter of urgency, the circumstances of any actual or likely difficulty in achieving the Council's objectives. The reports will be in accordance with the procedures contained in TMP6.

1.1 Credit and Counterparty Risk Management

Credit and counter-party risk is the risk of failure by a counterparty to meet its contractual obligations to the organisation under an investment, borrowing, capital project or partnership financing, particularly as a result of the counterparty's diminished creditworthiness, and the resulting detrimental effect on the organisation's capital or current (revenue) resources.

This organisation regards a key objective of its Treasury Management activities to be the security of the principal sums it invests. Accordingly, it will ensure that its counterparty lists and limits reflect a prudent attitude towards organisations with which funds may be deposited, and will limit its investment activities to the instruments, methods and techniques referred to in TMP4 Approved Instruments Methods and Techniques and detailed in the TMP Operational document.

It also recognises the need to have, and will therefore maintain, a formal counterparty policy in respect of those organisations from which it may borrow, or with whom it may enter into other financing arrangements.

The Council's prime consideration when assessing the suitability of counterparties and investments is Security, Liquidity and then Yield. Environmental, social and governance (ESG) factors will then be considered. The Council does not invest in bond or equity markets, therefore there is currently a lack of data available on which to base ESG considerations relevant to the Council's investments. The main ratings agencies are increasingly including ESG risks alongside more traditional financial risk metrics when assessing counterparty ratings. Therefore the incorporation of ESG risks is already being considered, to an extent, by the use of mainstream rating agencies. Our treasury advisors MUFG also continue to look at ways in which ESG factors can be incorporated into their creditworthiness assessment service, and they have advised clients that they will review the options and will update clients as progress is made. As the Council develops its environmental and climate

change policies, including the net zero strategy, ESG investment policies and procedures will then be developed to align with these.

1.2 Liquidity Risk Management

This is the risk that cash will not be available when it is needed, that ineffective management of liquidity creates additional unbudgeted costs, and that the organisation's business/service objectives will be thereby compromised.

This organisation will ensure it has adequate though not excessive cash resources, borrowing arrangements, overdraft or standby facilities to enable it at all times to have the level of funds available to it which are necessary for the achievement of its business/service objectives. This organisation will only borrow in advance of need where there is a clear business case for doing so and will only do so for the current capital programme or to finance future debt maturities or to ensure an adequate level of short-term investments to provide liquidity for the organisation.

1.3 Interest Rate Risk Management

The risk that fluctuations in the levels of interest rates create an unexpected or unbudgeted burden on the organisation's finances, against which the organisation has failed to protect itself adequately.

This organisation will manage its exposure to fluctuations in interest rates with a view to containing its interest costs, or securing its interest revenues, in accordance with the amounts provided in its budgetary arrangements as amended in accordance with TMP6 Reporting requirements and management information arrangements.

It will achieve this by the prudent use of its approved financing and investment instruments, methods and techniques, primarily to create stability and certainty of costs and revenues, but at the same time retaining a sufficient degree of flexibility to take advantage of unexpected, potentially advantageous changes in the level or structure of interest rates. This should be subject to the consideration and, if required, approval of any policy or budgetary implications.

1.4 Exchange Rate Risk Management

The risk that fluctuations in foreign exchange rates create an unexpected or unbudgeted burden on the organisation's finances, against which the organisation has failed to protect itself adequately.

The Council will manage its exposure to fluctuations in exchange rates so as to minimise any detrimental impact on its budgeted income/expenditure levels.

1.5 Inflation Rate Risk Management

Inflation risk, also called purchasing power risk, is the chance that cash flows from an investment won't be worth as much in the future because of changes in purchasing power due to inflation.

The Council will keep under review the sensitivity of its treasury assets and liabilities to inflation, and will seek to manage the risk accordingly in the context of the whole organisation's inflation exposures.

1.6 Refinancing Risk Management

The risk that maturing borrowings, capital, project or partnership financings cannot be refinanced on terms that reflect the provisions made by the organisation for those refinancings, both capital and current (revenue), and/or that the terms are inconsistent with prevailing market conditions at the time.

The Council will ensure that its borrowing, private financing and partnership arrangements are negotiated, structured and documented, and the maturity profile of the monies so raised is managed, with a view to obtaining offer terms for renewal or refinancing, if required, which are competitive and as favourable to the organisation as can reasonably be achieved in the light of market conditions prevailing at the time.

It will actively manage its relationships with its counterparties in these transactions in such a manner as to secure this objective, and will avoid over reliance on any one source of funding if this might jeopardise achievement of the above.

1.7 Legal and Regulatory Risk Management

The risk that the organisation itself, or an organisation with which it is dealing in its Treasury Management activities, fails to act in accordance with its legal powers or regulatory requirements, and that the organisation suffers losses accordingly.

The Council will ensure that all of its Treasury Management activities comply with its statutory powers and regulatory requirements. It will demonstrate such compliance, if required to do so, to all parties with whom it deals in such activities. In framing its credit and counterparty policy under TMP1[1] credit and counterparty risk management, it will ensure that there is evidence of counterparties' powers, and compliance in respect of the transactions they may effect with the organisation, particularly with regard to duty of care and fees charged.

This organisation recognises that future legislative or regulatory changes may impact on its Treasury Management activities and, so far as it is reasonably able to do so, will seek to minimise the risk of these impacting adversely on the organisation.

1.8 Fraud, Error and Corruption, and Contingency Management

The risk that an organisation fails to identify the circumstances in which it may be exposed to the risk of loss through fraud, error, corruption or other eventualities in its Treasury Management dealings, and fails to employ suitable systems and procedures and maintain effective contingency management arrangements to these ends. It includes the area of risk commonly referred to as operational risk.

This organisation will ensure that it has identified the circumstances which may expose it to the risk of loss through fraud, error, corruption or other eventualities in its Treasury Management dealings. Accordingly, it will employ suitable systems and procedures, and will maintain effective contingency management arrangements, to these ends.

The Council will therefore:-

- a) Seek to ensure an adequate division of responsibilities and maintenance at all times of an adequate level of internal check which minimises such risks.

- b) Fully document all its Treasury Management activities so that there can be no possible confusion as to what proper procedures are.
- c) Ensure that staff will not be allowed to take up Treasury Management activities until they have had proper training in procedures and are then subject to an adequate and appropriate level of supervision.

Records will be maintained of all Treasury Management transactions so that there is a full audit trail and evidence of the appropriate checks being carried out.

1.9 Price Risk Management

The risk that, through adverse market fluctuations in the value of the principal sums an organisation borrows and invests, its stated Treasury Management policies and objectives are compromised, against which effects it has failed to protect itself adequately.

The Council will seek to ensure that its stated Treasury Management policies and objectives will not be compromised by adverse market fluctuations in the value of the principal sums it invests, and will accordingly seek to protect itself from the effects of such fluctuations.

TMP2 : PERFORMANCE MEASUREMENT

The Council is committed to the pursuit of best value in its Treasury Management activities, and to the use of performance methodology in support of that aim, within the framework set out in the Treasury Management Policy Statement.

The Treasury Management function will be the subject of ongoing analysis of the value it adds in support of the Council's stated service objectives. It will be the subject of regular examination of alternative methods of service delivery, of the availability of fiscal, grant or subsidy incentives, and the scope for other potential improvements. The performance of the Treasury Management function will be measured using the criteria set out in the detailed TMP Operational document.

TMP3 : DECISION-MAKING AND ANALYSIS

The Council will maintain full records of its Treasury Management decisions, and of the processes and practices applied in reaching those decisions, both for the purposes of learning from the past, and for demonstrating that reasonable steps were taken to ensure that all issues relevant to those decisions were taken into account at the time. The issues to be addressed and processes and practices to be pursued in reaching decisions are set out in the detailed TMP Operational document.

TMP4 : APPROVED INSTRUMENTS, METHODS AND TECHNIQUES

The Council will undertake its Treasury Management activities by employing only those instruments, methods and techniques set out in the detailed TMP Operational document and within the limits and parameters defined in TMP1.

TMP5 : ORGANISATION, CLARITY AND SEGREGATION OF RESPONSIBILITIES, AND DEALING ARRANGEMENTS

The Council considers it essential, for the purposes of the effective control and monitoring of its Treasury Management activities, for the reduction of risk of fraud or error, and for the pursuit of optimum performance, that these activities are structured and managed in a fully integrated manner, and that there is at all times clarity of Treasury Management responsibilities.

The principle on which this will be based is the clear distinction between those charged with setting Treasury Management policies and those charged with implementing and controlling these policies, particularly with regard to the execution and transmission of funds, the recording and administering of Treasury Management decisions and the audit and review of the Treasury Management function.

If and when this organisation intends, as a result of lack of resources or other circumstances, to depart from these principles, the Section 151 Officer will ensure that the reasons are properly reported in accordance with TMP6 and the implications properly considered and evaluated.

The Section 151 Officer will ensure that there are clear written statements of the responsibilities for each post engaged in Treasury Management, and the arrangements for absence cover. S/he will also ensure that at all times those engaged in Treasury Management will follow the policies and procedures set out. The present arrangements are set out in the detailed TMP Operational document.

The Section 151 Officer will ensure that there is proper documentation for all deals and transactions, and that procedures exist for the effective transmission of funds. The present arrangements are set out in the detailed TMP Operational document.

The delegations to the Section 151 Officer in respect of Treasury Management are set out in the detailed TMP Operational document. S/he will fulfil all such responsibilities in accordance with the Council's policy statement and TMPs and, if a CIPFA member, the Standard of Professional Practice on Treasury Management.

TMP6 : REPORTING REQUIREMENTS AND MANAGEMENT INFORMATION ARRANGEMENTS

The Council will ensure that regular reports are prepared and considered on the implementation of its Treasury Management policies; on the effects of decisions taken and transactions executed in pursuit of those policies; implications of changes, particularly budgetary, resulting from regulatory, economic, market or other factors affecting its Treasury Management activities; and on the performance of the Treasury Management function.

As a minimum Cabinet and Council will receive:

- An annual report on the planned strategy to be pursued in the coming year and the reporting of Prudential Indicators.
- A mid-year review
- An annual report on the performance of the Treasury Management function including the performance against the Prudential Indicators, the effects of the decisions taken and the

transactions executed in the past year and on any circumstances of non-compliance with the Council's Treasury Management policy statement and TMPs.

Cabinet will receive regular monitoring reports on Treasury Management activities and risks.

The Audit and Governance Committee will have responsibility for the scrutiny of Treasury Management policies and practices.

The Treasury Management indicators will be considered together with the Treasury Management indicators in the Prudential Code as part of the budget approval process.

The present arrangements and the form of these reports are set out in the detailed TMP Operational document.

TMP7 : BUDGETING, ACCOUNTING AND AUDIT ARRANGEMENTS

The Section 151 Officer will prepare and Council will approve and, if necessary from time to time, will amend, an annual budget for Treasury Management, which will bring together all of the costs involved in running the Treasury Management function together with associated income. The matters to be included will at minimum be those required by statute or regulation, together with such information as will demonstrate compliance with TMP1, TMP2 and TMP4.

The Section 151 Officer will exercise effective controls over this budget and report upon and recommend any changes required in accordance with TMP6.

The Council will account for its Treasury Management activities, for decisions made and transactions executed in accordance with appropriate accounting practices and standards, and with statutory and regulatory requirements in force for the time being.

TMP8 : CASH AND CASH FLOW MANAGEMENT

Unless statutory or regulatory requirements demand otherwise, all monies in the hands of the Council will be under the control of the Section 151 Officer and will be aggregated for cash flow and investment management purposes. Cash flow projections will be prepared on a regular and timely basis and the Section 151 Officer will ensure that these are adequate for the purpose of monitoring compliance with TMP1. The present arrangements for preparing cash flow projections, and their form, are set out in the detailed TMP Operational document.

TMP9 : MONEY LAUNDERING

The Council is alert to the possibility that it may become the subject of an attempt to involve it in a transaction involving the laundering of money. The Council will, therefore, maintain procedures for verifying and recording the identity of counterparties and reporting suspicions, and will ensure that all staff involved are properly trained. The present arrangements, including the name of the officer to whom reports should be made, are set out in the detailed TMP Operational document.

TMP10 : TRAINING AND QUALIFICATIONS

The Council recognises the importance of ensuring that all staff involved in the Treasury Management function are fully equipped to undertake the duties and responsibilities allocated

to them. It will seek to appoint individuals, who are both capable and experienced and will provide training for staff to enable them to acquire and maintain an appropriate level of expertise, knowledge and skills. The Section 151 Officer will recommend and implement the necessary arrangements.

The Section 151 Officer will ensure that Council members tasked with Treasury Management responsibilities, including those responsible for scrutiny, have access to training relevant to their needs and those responsibilities.

Those charged with governance recognise their individual responsibility to ensure that they have the necessary skills to complete their role effectively.

TMP11 : USE OF EXTERNAL SERVICE PROVIDERS

The Council recognises that responsibility for the Treasury Management decisions remains with the Council at all times. It recognises that there may be potential value in employing external providers of Treasury Management services, in order to acquire access to specialist skills and resources. When it employs such service providers, it will ensure it does so for reasons which will have been submitted to a full evaluation of the costs and benefits. Terms of appointment will be properly agreed, documented and subject to regular review. It will ensure, where feasible and necessary, that a spread of service providers is used, to avoid over reliance on one or a small number of companies. Where services are subject to formal tender or re-tender arrangements, legislative requirements will always be observed.

The monitoring of such arrangements rests with the Section 151 Officer, and details of the current arrangements are set out in the detailed TMP Operational document.

TMP12 : CORPORATE GOVERNANCE

The Council is committed to the pursuit of proper corporate governance throughout its services, and to establishing the principles and practices by which this can be achieved. Accordingly the Treasury Management function and its activities will be undertaken with openness, transparency, honesty, integrity and accountability.

The Council has adopted and implemented the key recommendations of the Code. This, together with the other arrangements are set out in the detailed TMP Operational document and are considered vital to the achievement of proper governance in Treasury Management, and the Section 151 Officer will monitor and, if and when necessary, report upon the effectiveness of these arrangements.

TMP 13: MANAGEMENT PRACTICES FOR NON-TREASURY INVESTMENTS

This Council recognises that investment in other financial assets and property primarily for financial return, taken for non-treasury management purposes, requires careful investment management. Such activity includes loans supporting service outcomes, investments in subsidiaries, and investment property portfolios.

The Council will ensure that all of its investments are covered in the capital strategy and/or investment strategy, and will set out, where relevant, the Council's risk appetite and specific policies and arrangements for non-treasury investments. It will be recognised that the risk appetite for these activities may differ from that for treasury management.

The Council maintains a schedule setting out a summary of existing material investments and the Council's risk exposure.

The following TMPs will apply with regard to non-treasury management investments:-

TMP1 - Risk management - including investment and risk management criteria for material non-treasury investment portfolios

TMP2 - Performance measurement and management - including methodology and criteria for assessing the performance and success of non-treasury investments

TMP5 - Decision making and analysis - including a statement of the governance requirements for decision-making in relation to non-treasury investments, and arrangements to ensure that appropriate professional due diligence is carried out to support decision making

TMP6 - Reporting and management information - including where and how often monitoring reports are taken

TMP10 - Training and qualifications - including how the relevant knowledge and skills in relation to non-treasury investments will be arranged.

ANNEX 9 Treasury Management Glossary of Terms

Bank Rate	The Official Bank rate paid on commercial bank reserves i.e. reserves placed by commercial banks with the Bank of England as part of the Bank's operations to reduce volatility in short term interest rates in the money markets.
Base Rate	Minimum lending rate of a bank or financial institution in the UK.
Capital Financing Requirement	The Council's underlying need for borrowing for a capital purpose.
Counterparty	The organisations responsible for repaying the Council's investment upon maturity and for making interest payments.
Credit Default Swap (CDS)	A specific kind of counterparty agreement which allows the transfer of third party credit risk from one party to the other. One party in the swap is a lender and faces credit risk from a third party, and the counterparty in the credit default swap agrees to insure this risk in exchange for regular periodic payments (essentially an insurance premium). If the third party defaults, the party providing insurance will have to purchase from the insured party the defaulted asset. In turn, the insurer pays the insured the remaining interest on the debt, as well as the principal.
Credit Rating	This is a scoring system that lenders issue organisations with, to determine how credit worthy they are.
Gilts	These are issued by the UK Government in order to finance public expenditure. Gilts are generally issued for a set period and pay a fixed rate of interest for the period.
iTraxx	This is an index published by Markit who are a leading company in CDS pricing and valuation. The index is

	<p>based on an equal weighting of the CDS spread of 25 European financial companies.</p> <p>Clients can use the iTraxx to see where an institution's CDS spread is relative to that of the market and judge its creditworthiness in that manner, as well as looking at the credit ratings.</p>
Liquidity	An asset is perfectly liquid if one can trade immediately, at a price not worse than the uninformed expected value, the quantity one desires.
Long term	A period of one year or more.
Maturity	The date when an investment is repaid or the period covered by a fixed term investment.
Minimum Revenue Provision	Capital expenditure is generally expenditure on assets which have a life expectancy of more than one year e.g. buildings, vehicles, machinery etc. It would be impractical to charge the entirety of such expenditure to revenue in the year in which it was incurred therefore such expenditure is spread over several years in order to try to match the years over which such assets benefit the local community through their useful life. The manner of spreading these costs is through an annual Minimum Revenue Provision.
Monetary Policy Committee (MPC)	Interest rates are set by the Bank's Monetary Policy Committee. The MPC sets an interest rate it judges will enable the inflation target to be met. Their primary target (as set by the Government) is to keep inflation at or around 2%.
Security	An investment instrument, issued by a corporation, government, or other organization which offers evidence of debt or equity.
Short Term	A period of 364 days or less
Supranational Bonds	A supranational entity is formed by two or more central governments with the purpose of promoting economic development for the member countries. Supranational institutions finance their activities by issuing debt, such as supranational bonds.

	<p>Examples of supranational institutions include the European Investment Bank and the World Bank.</p> <p>Similar to government bonds, the bonds issued by these institutions are considered very safe and have a high credit rating.</p>
Treasury Management	<p>The management of the local authority's investments and cash flows, its banking, money market and capital market transactions; the effective control of the risks associated with those activities; and the pursuit of optimum performance consistent with those risks.</p>
Working Capital	<p>Cash and other liquid assets needed to finance the everyday running of a business such as the payment of salaries and purchases.</p>
Yield	<p>The annual rate of return on an investment, expressed as a percentage.</p>

ANNEX 10 PRUDENTIAL INDICATORS – DEFINITIONS / INTERPRETATION

CIPFA's Prudential Code for Capital Finance requires local authorities to prepare Prudential Indicators of their intended capital spending plans for the forthcoming and future years. The indicators are intended to help the decision making process within an authority and must be approved by the full Council before the beginning of the financial year. The indicators are neither comparative statistics nor performance indicators. Different Councils will have different figures reflecting their history and local circumstances.

1. **Estimate of total capital expenditure to be incurred** – This summarises the Council's current plans for the total capital expenditure over the next 3 years. Details of individual schemes are contained within the capital estimate pages.
2. **Estimates of Capital Financing Summary** – This details the capital financing sources for the next 3 years.
3. **Estimated Ratio of financing costs to net revenue stream** - This indicator has been calculated as debt interest, borrowing refinancing costs, minimum revenue provision, depreciation for HRA, net of investment income and divided by the General Fund (GF) budget requirement for the GF element of costs and the total of HRA income for the HRA costs. For GF Account, the indicator has been calculated gross of government support in the form of RSG for the proportion of capital expenditure funded from supported level of borrowing.
4. **Capital Financing Requirement** – This represents the Council's underlying need to borrow to finance historic capital expenditure and is derived by aggregating specified items from the Council's balance sheet. The actual **net borrowing** is lower than this because of the current strategy to use internal borrowing rather than replace maturing debt.
5. **Actual External Debt** – This is a key indicator and Section 3 of the Local Government Act 2003 requires the Council to ensure that gross external debt does not, except in the short term, exceed the total of the Capital Financing Requirement in the preceding year plus estimates of any additional capital financing requirement for the current and next two financial years.
6. **Authorised Borrowing Limit for external debt** - This indicator represents the maximum amount the Council may borrow at any point in time in the year and has to be set at a level the Council considers is **prudent**. It allows for uncertain cash flow movements and borrowing in advance for future requirements.

The recommended authorised limits for external debt are gross of investments and are consistent with the Council's current commitments, existing plans and the current treasury management policy and strategy. The authorised limit determined for 2024-25 is the statutory limit determined under section 3(1) of the Local Government Act 2003.
7. **Operational Boundary for external debt** - The proposed operational boundary for external debt is calculated on the same estimates as the authorised limit but reflects estimates of the

most likely, prudent but not worst case scenario, without the additional headroom included within the authorised limit to allow for example for unusual cash movements, and equates to the maximum of external debt projected by this estimate. Within the operational boundary, figures for borrowing and other long term liabilities are separately identified.

8. Treasury Management – these indicators form part of the treasury management strategy and policy statement approved by the Council each year before the beginning of the financial year. The main indicators are:

(a) The adoption of **CIPFA Code of Practice for Treasury Management**, which the Council adopted before the current Prudential System was introduced.

(b) **Interest Rate Exposure** - The approved Treasury Policy Statement and Strategy contains upper and lower limits for fixed and variable interest rate exposure for net outstanding principal sums.

(c) **Maturity Structure of Borrowing** – The approved treasury management strategy also sets out the maturity structure of the Council's borrowing to ensure the Council is not exposed to risks of having to refinance large level of debt at a time in future when interest rates may be volatile or uncertain.

(d) **Investments longer than 365 days** – The approved treasury management strategy includes a limit of £20m for investments maturing beyond 365 days.

This page is intentionally left blank